

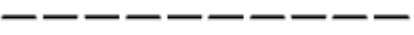



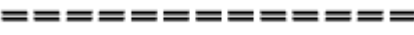












International Fibreboard Casecode

This code which is prepared in collaboration with ESBO (The European Solid Board Organisation), contains a methodical presentation of all existing box design styles, a code number being assigned to each design. As a reference document, the code is used world-wide and it has been adopted by the United Nations.

Symbols used in drawings and computer systems.

Drawing symbol	Computer code	Description
Cuts, scores, slits etc.		
	CL	contours of erected cases or cutting lines of case blanks
	SC	slotted cuts
	CI	crease lines (inward bend)
	CO	crease lines (outward bend)
	SI	slit-score lines (inward bend)
	SO	slit-score lines(outwardbend)
	DS	double-score lines
	PL	perforation lines
	SE	soft edge cutting lines
	TP	tear perforation
Manufacturer's joint		
	SJ	Stitched joint
	TJ	Taped joint
	GJ	Glued joint
Openings		
	PC	handholds stripped
	UC	handholds non-stripped
	NC	handholds non-stripped
Flute direction		
	FD	Flute direction indicator

Case dimensions

Unless otherwise specified all dimensions are expressed as internal dimensions in mm as follows:

Length (L) x Breadth (B) x Height (H)

Length (L) the longer dimension at the opening

Breadth (B) = the shorter dimension at the opening

Height (H) -the dimension from the top of the opening to the base

The dimensions L B. H are specified in each description of the case construction, for some models the numerical value of B can exceed the numerical value of L. Dimensions should be measured under standard climate conditions, on the flat blank from the centre of crease bearing the thickness of the material in mind.

For telescope type boxes the height (h) of the upper part (lid) should be given as a fourth measurement after an oblique stroke, i.e.

355 x 205 x 120/40 mm

(L) (B) (H) (h)

For cases with overlapping outer flaps the length of the area of overlapping (o) should be given as a fourth measurement after an oblique stroke. i.e.

355 x 205 x 120/ 40 mm

(L) (B) (H) (o)

Sheet dimensions

Unless otherwise specified, the dimensions of a corrugated sheet are expressed in mm as follows:

1st dimension x 2nd dimension

1st dimension=along the glue lines

2nd dimension =across the glue lines

Style versions

Several case types may have derived versions without the necessity to create a new style. In this case a suffix should be added to the basic style number separated by a dash.

Example 0201-2.

Aversion maybe unique to individual manufacturers.

Combination of types

The construction styles shown are of the basic types of fibreboard cases. If the ultimate construction is a combination of two or three basic models. e.g. flap arrangements, they may also be described as follows:

Top flaps as 0204, Bottom flaps as 0215

This type may also be described as 0204/0215 (Top flaps. Bottom flaps).

0204

0215

0204/0215



Styles and the manufacturers joint

The drawing style layouts as shown in this Code may need to be re-arranged depending on the Manufacturers Joint chosen. Some styles may have a Manufacturers Joint which maybe glued, stitched

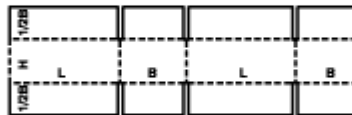
החומר רוכז על ידי:

or taped. A glued or stitched Joint may be an extension of either the short or the long panel. The sketches show how these would be indicated on a drawing:

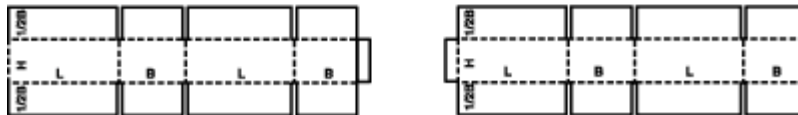
Example for all styles:



0201



Taped joint



Glued or stitched joint

This applies to all designs in this Code.

Manual of Automated erection

Each design style includes one of the following indications

M - usually manual erection

A - usually automated erection

M/A - can be either manual or automated

M+A - requires a combination of both

These indications are based on current practice and are intended to give additional information to specifiers and users

Some manually erected cases can be closed automatically (e.g : 0216 or 0712)

Closure of boxes

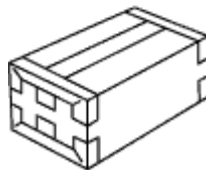
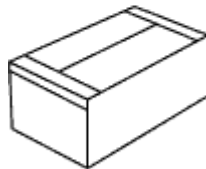
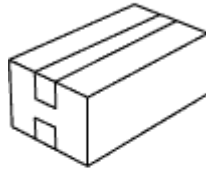
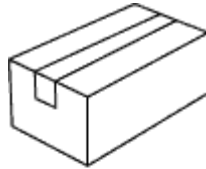
Correct and effective closure of the packages is as important as the packaging construction itself.

The following methods of closure are possible either singly or in combination:

- by gluing, cold or hot
- by taping
- by interlocking
- by stitching

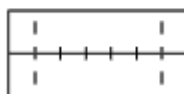
Closure by taping

This can be done according to the example shown



Closure by stitching

This can be done according to the example shown



General Remarks

Please note that several case designs contained in the Code under a specific number could also be classified under other basic type groups.

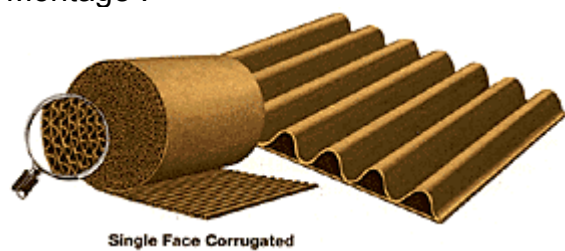
FULL CODE XXXX–XXXX	
STYLE	STYLE VERSION
XXXX	–XXXX
The standard recognised shape/design from this code	The version number to differentiate the variation from the standard design (corresponding to an individual drawing or CAD/CAM library).

Category : 01

Commercial rolls and sheets.

Description : 0100

Montage :



Montage :

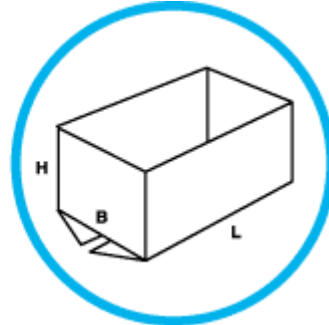


Category : 02

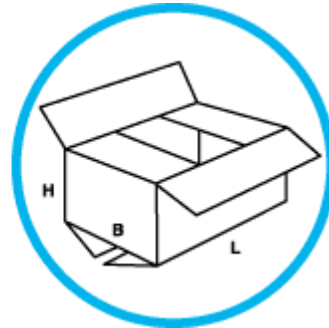
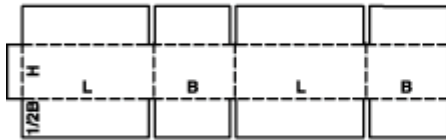
Slotted-type boxes consist of basically one piece with a glued, stitched or taped manufacturers joint and top and bottom flaps. They are shipped flat, ready to use and require closing using the flaps provided.

Description : 0200

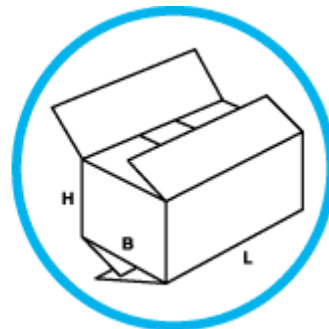
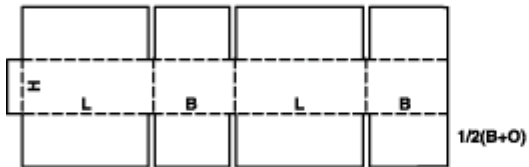
Montage : M/A



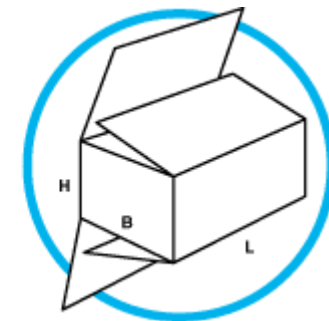
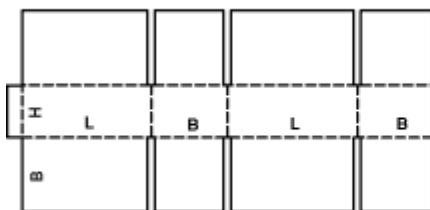
Montage : M/A



Montage : M/A



Montage : M/A

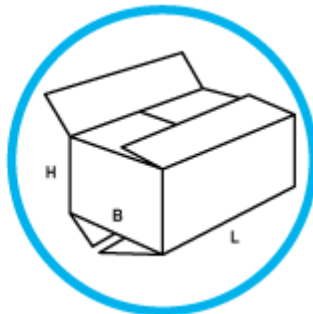
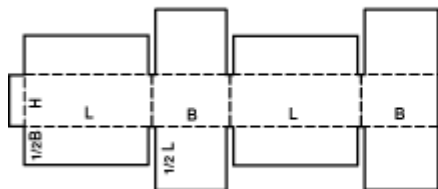


Category : 02

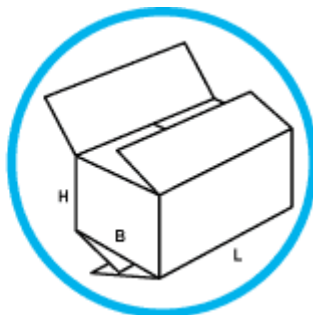
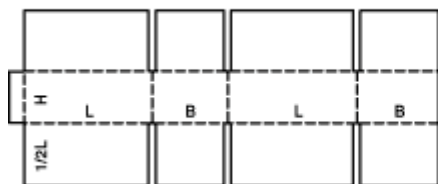
Slotted-type boxes consist of basically one piece with a glued, stitched or taped manufacturers joint and top and bottom flaps. They are shipped flat, ready to use and require closing using the flaps provided.

Description : 0204

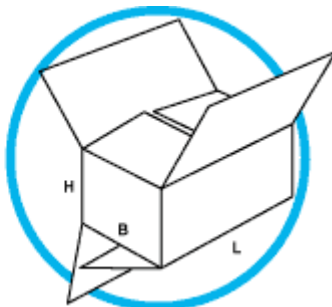
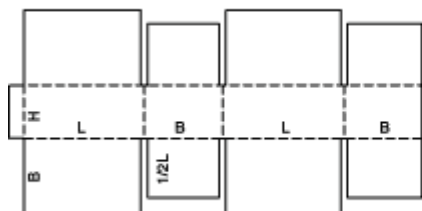
Montage : M/A



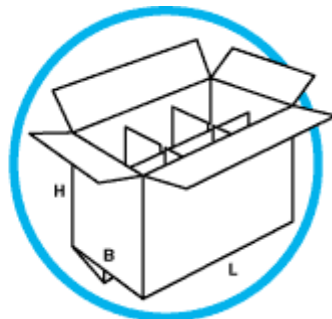
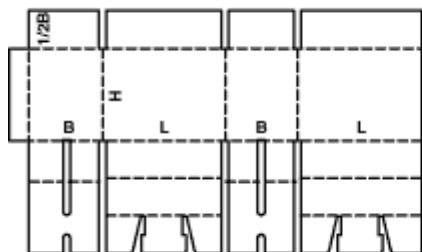
Montage : M/A



Montage : M/A



Montage : M

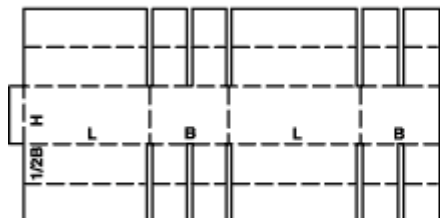


Category : 02

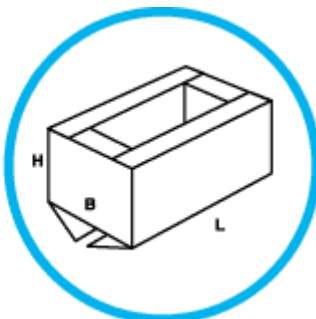
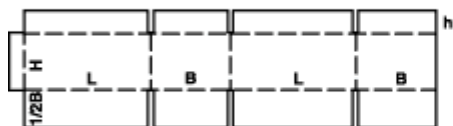
Slotted-type boxes consist of basically one piece with a glued, stitched or taped manufacturers joint and top and bottom flaps. They are shipped flat, ready to use and require closing using the flaps provided.

Description : 0208

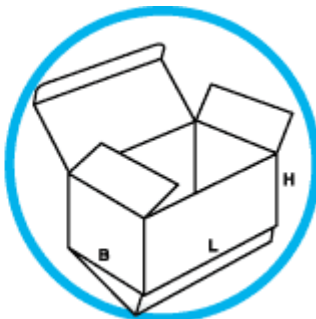
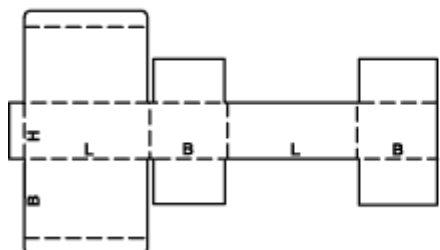
Montage : M



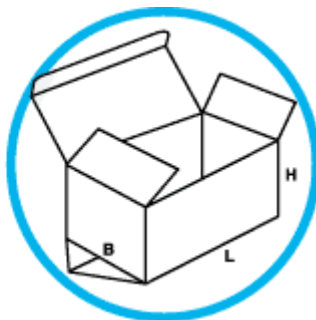
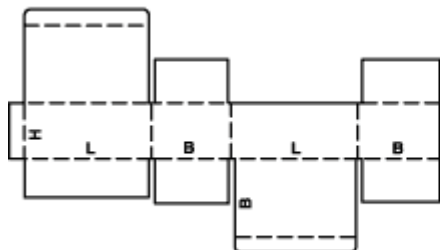
Montage : M/A



Montage : M



Montage : M

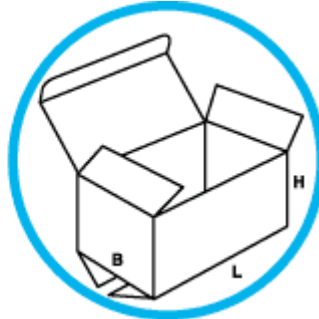
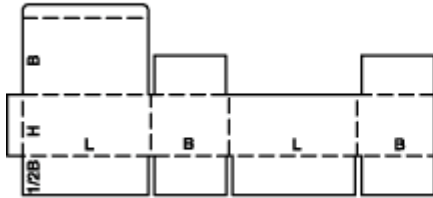


Category : 02

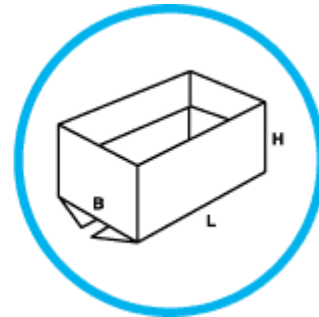
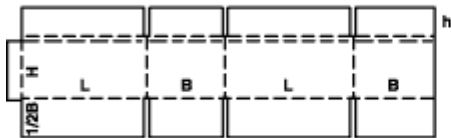
Slotted-type boxes consist of basically one piece with a glued, stitched or taped manufacturers joint and top and bottom flaps. They are shipped flat, ready to use and require closing using the flaps provided.

Description : 0212

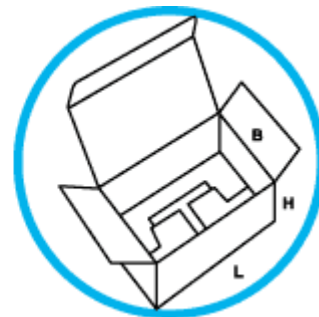
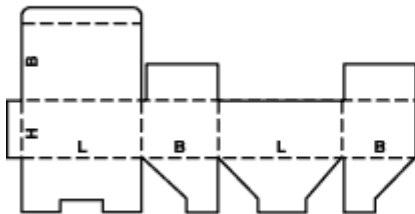
Montage : M/A



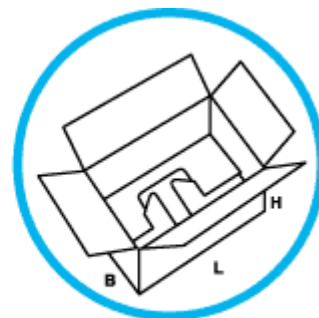
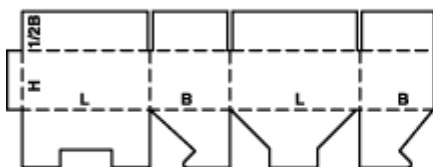
Montage : M



Montage : M



Montage : M



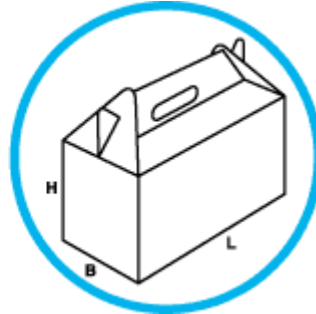
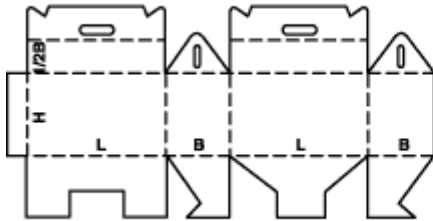
Closure of top can be automated
La fermeture du dessus peut être automatisée
Der verschluss des aufsatzes kann automatisiert werden

Category : 02

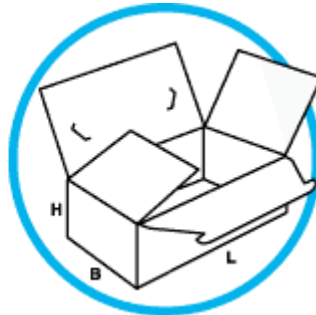
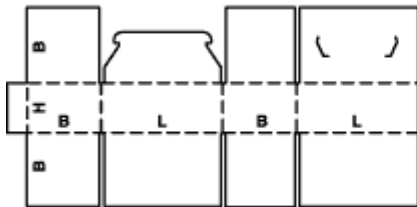
Slotted-type boxes consist of basically one piece with a glued, stitched or taped manufacturers joint and top and bottom flaps. They are shipped flat, ready to use and require closing using the flaps provided.

Description : 0217

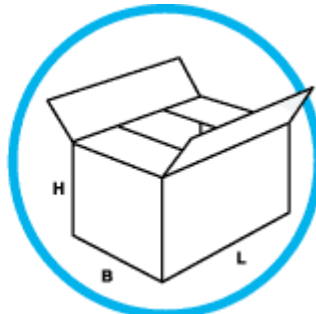
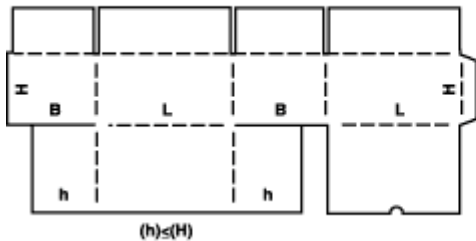
Montage : M



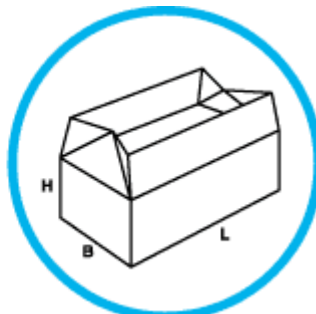
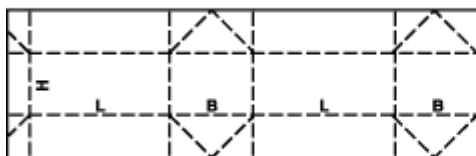
Montage : M



Montage : M



Montage : M

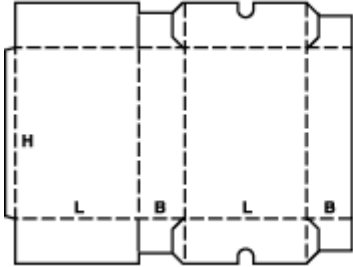


Category : 02

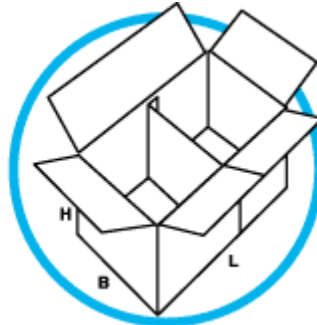
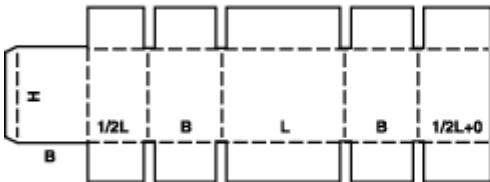
Slotted-type boxes consist of basically one piece with a glued, stitched or taped manufacturers joint and top and bottom flaps. They are shipped flat, ready to use and require closing using the flaps provided.

Description : 0227

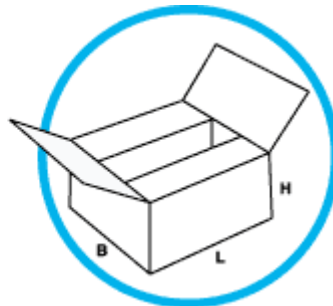
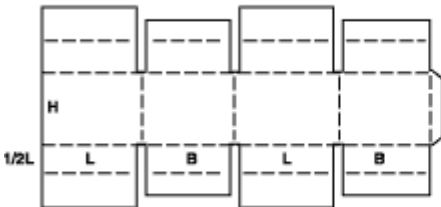
Montage : M



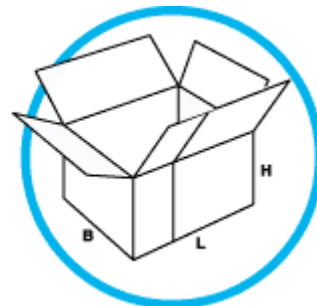
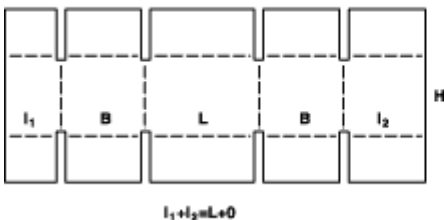
Montage : M/A



Montage : M



Montage : M/A

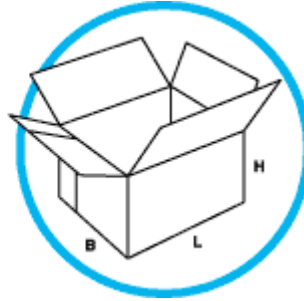
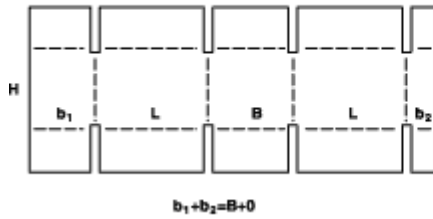


Category : 02

Slotted-type boxes consist of basically one piece with a glued, stitched or taped manufacturers joint and top and bottom flaps. They are shipped flat, ready to use and require closing using the flaps provided.

Description : 0231

Montage : M/A

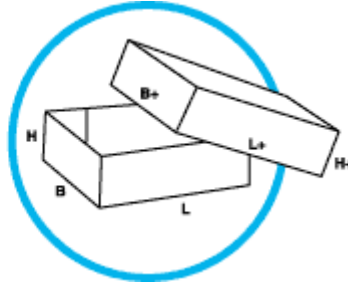
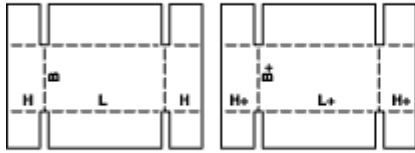


Category : 03

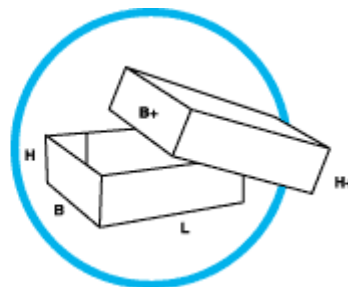
Telescope-type boxes consist of more than one piece and are characterised by a lid and/or bottom telescoping over the body of the box.

Description : 0300

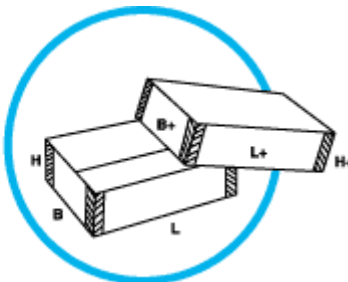
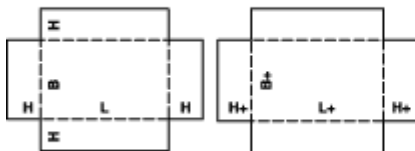
Montage : M/A



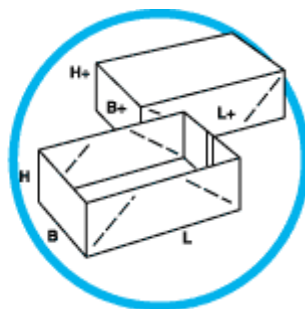
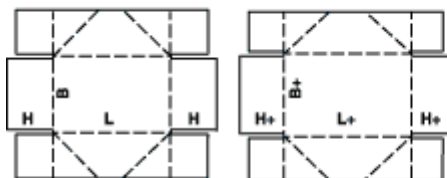
Montage : M/A



Montage : M



Montage : M

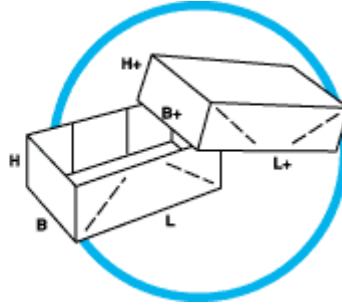
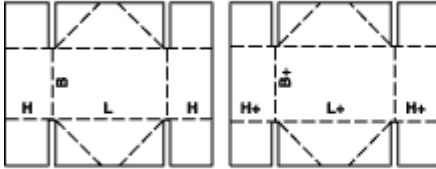


Category : 03

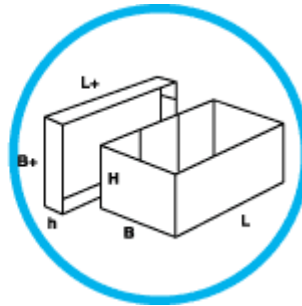
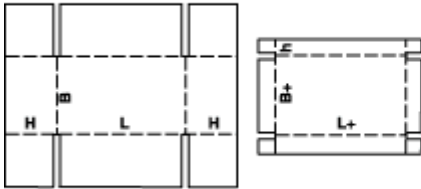
Telescope-type boxes consist of more than one piece and are characterised by a lid and/or bottom telescoping over the body of the box.

Description : 0304

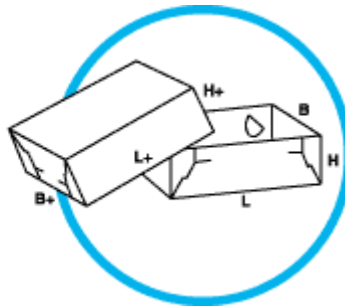
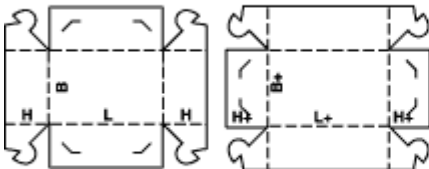
Montage : M



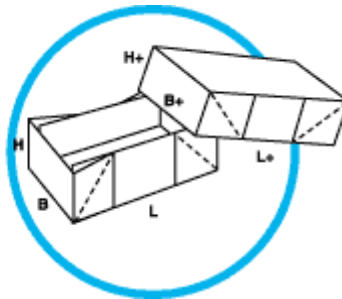
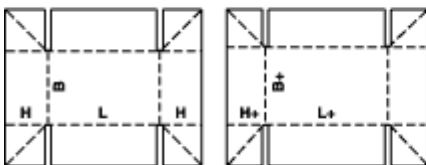
Montage : M/A



Montage : M



Montage : M

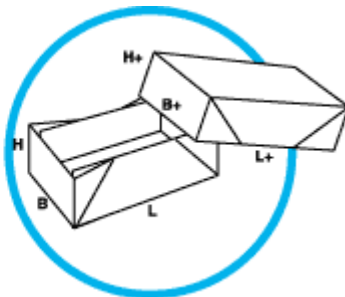
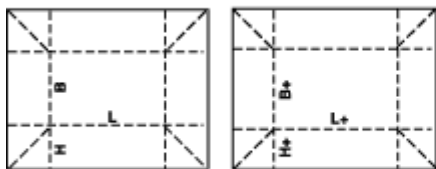


Category : 03

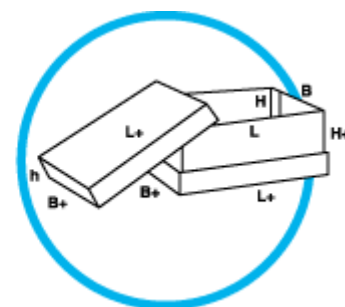
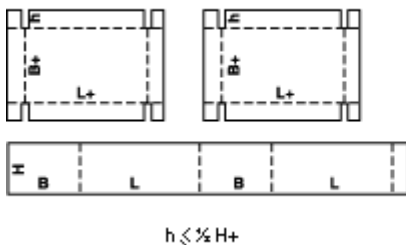
Telescope-type boxes consist of more than one piece and are characterised by a lid and/or bottom telescoping over the body of the box.

Description : 0309

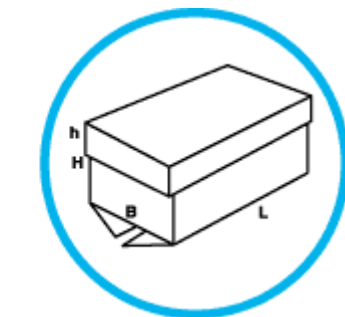
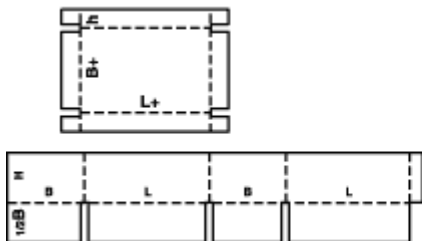
Montage : M



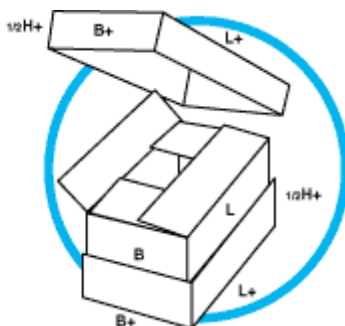
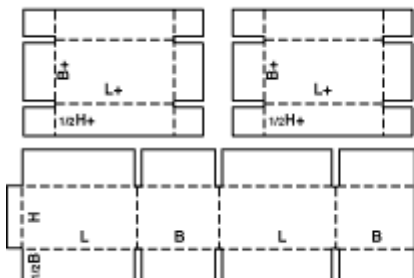
Montage : M + A



Montage : M/A



Montage : M/A

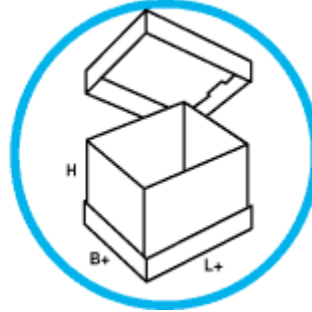
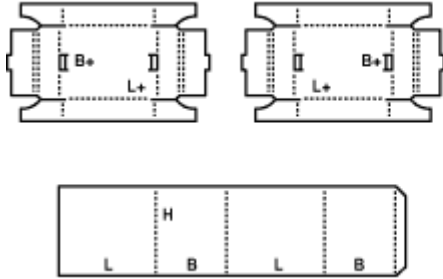


Category : 03

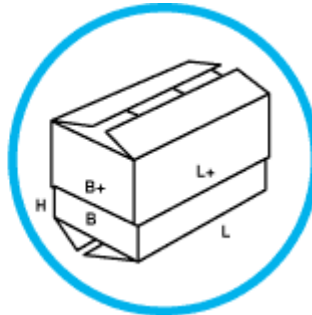
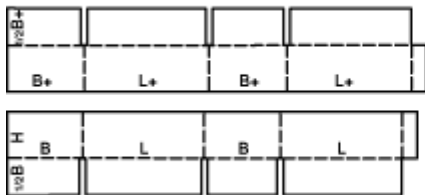
Telescope-type boxes consist of more than one piece and are characterised by a lid and/or bottom telescoping over the body of the box.

Description : 0314

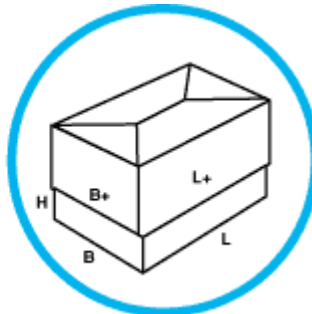
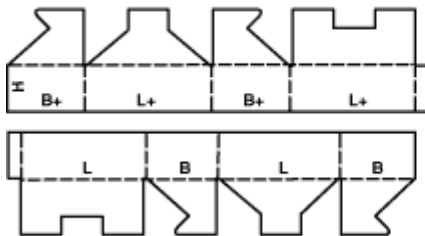
Montage : M



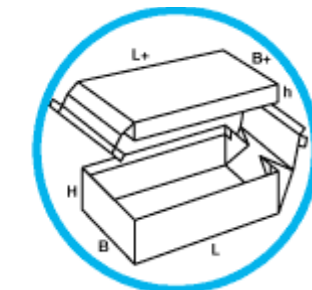
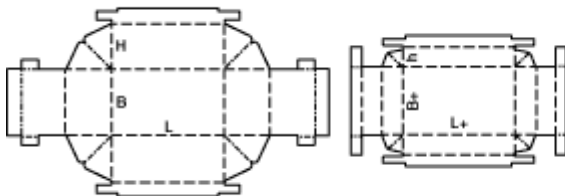
Montage : M/A



Montage : M



Montage : M

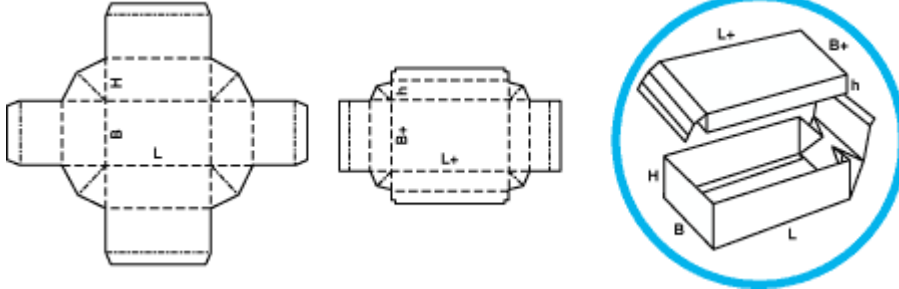


Category : 03

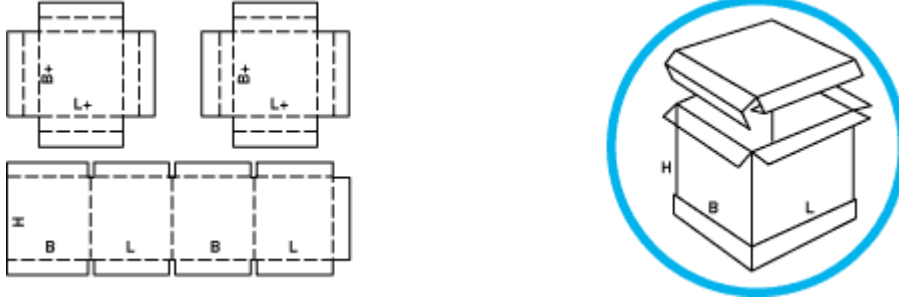
Telescope-type boxes consist of more than one piece and are characterised by a lid and/or bottom telescoping over the body of the box.

Description : 0323

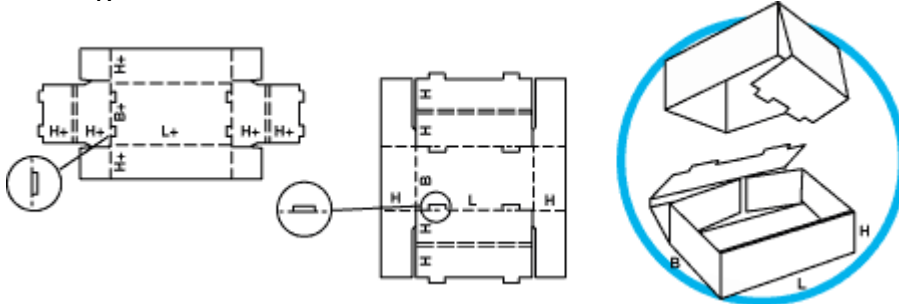
Montage : M



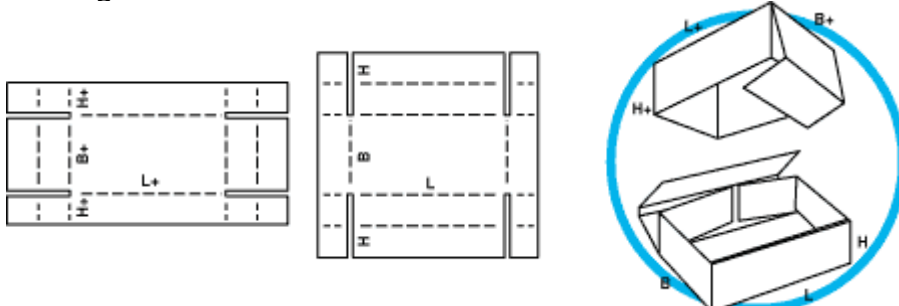
Montage : A



Montage : M/A



Montage : M/A

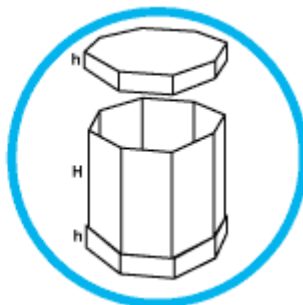
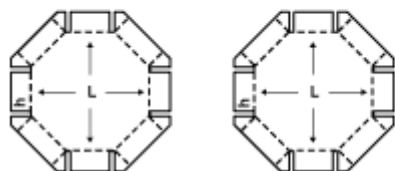
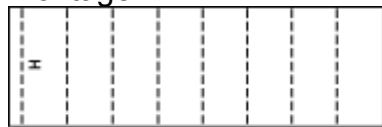


Category : 03

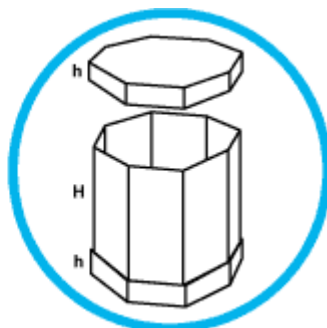
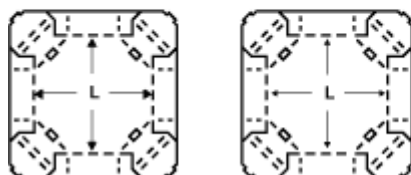
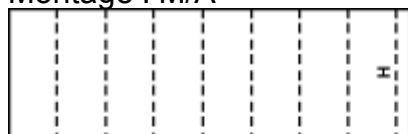
Telescope-type boxes consist of more than one piece and are characterised by a lid and/or bottom telescoping over the body of the box.

Description : 0350

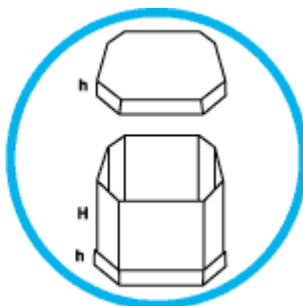
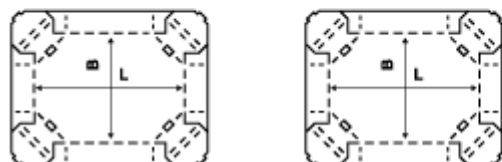
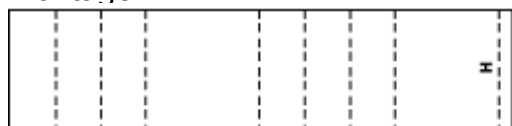
Montage : M



Montage : M/A



Montage : M/A

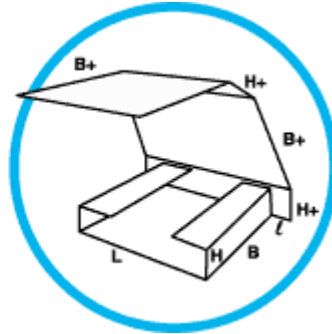
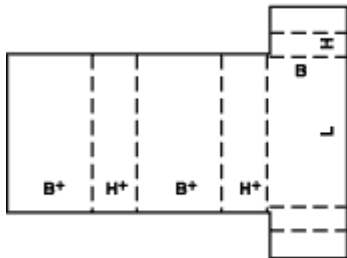


Category : 04

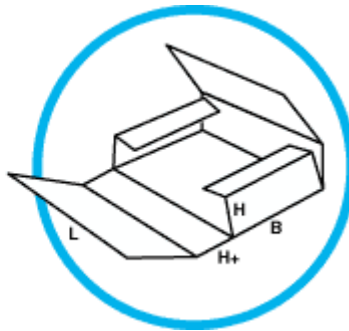
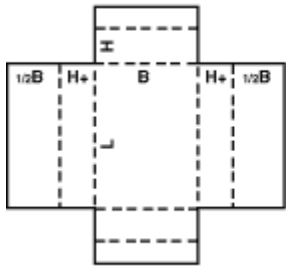
Folder-type boxes and trays usually consist of only one piece of board. The bottom of the box is hinged to form two or all side walls and the cover. Locking tabs, handles, display panels etc., can be incorporated in some designs.

Description : 0400

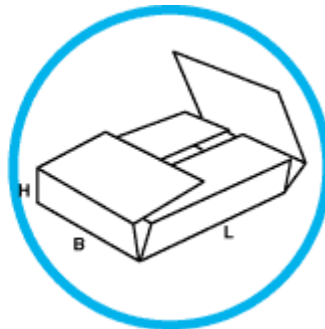
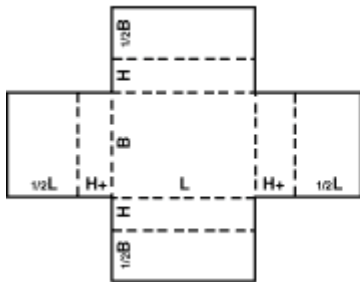
Montage : M



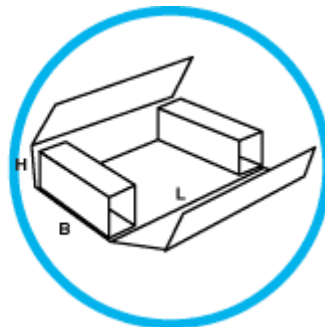
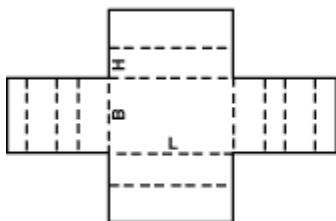
Montage : M



Montage : M



Montage : M

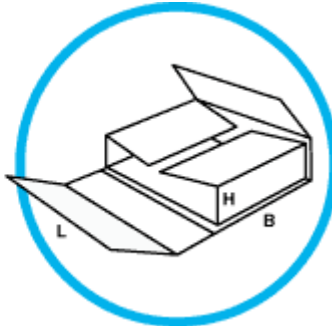


Category : 04

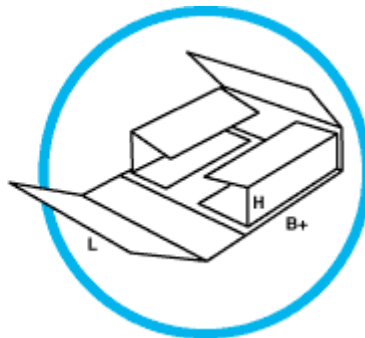
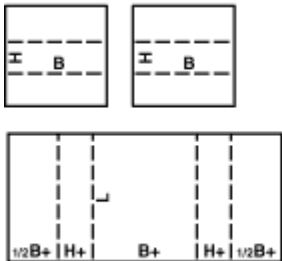
Folder-type boxes and trays usually consist of only one piece of board. The bottom of the box is hinged to form two or all side walls and the cover. Locking tabs, handles, display panels etc., can be incorporated in some designs.

Description : 0404

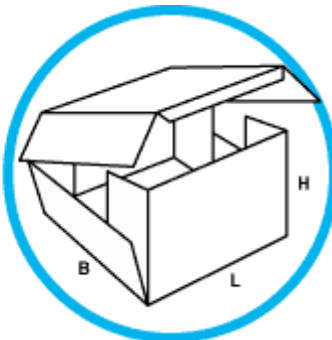
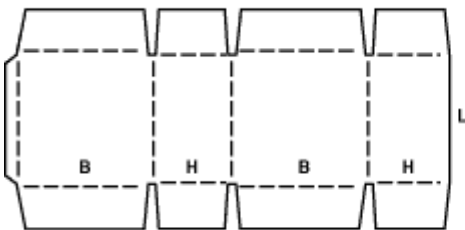
Montage : M



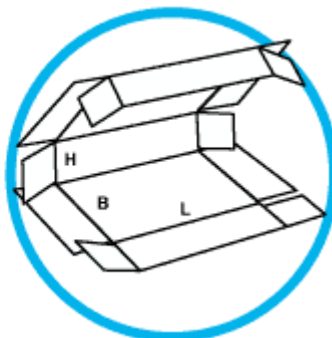
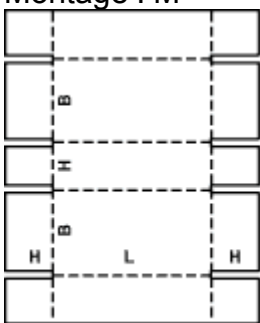
Montage : M



Montage : A



Montage : M

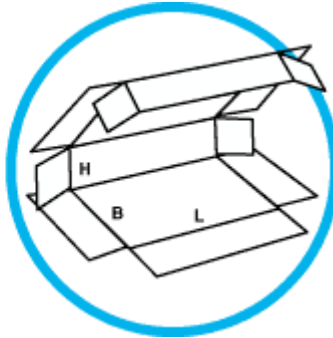
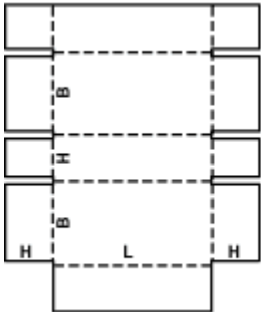


Category : 04

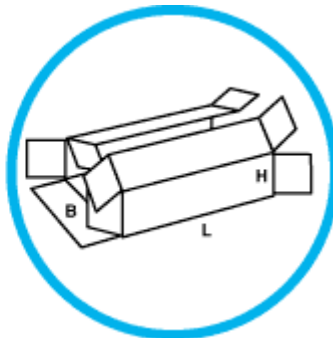
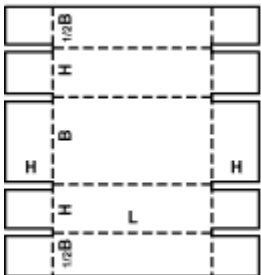
Folder-type boxes and trays usually consist of only one piece of board. The bottom of the box is hinged to form two or all side walls and the cover. Locking tabs, handles, display panels etc., can be incorporated in some designs.

Description : 0410

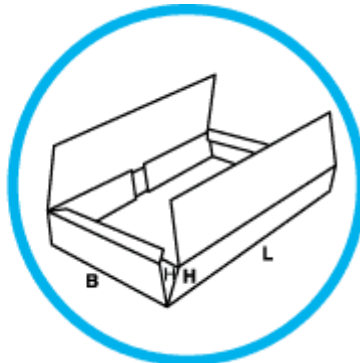
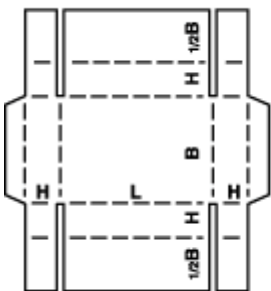
Montage : M/A



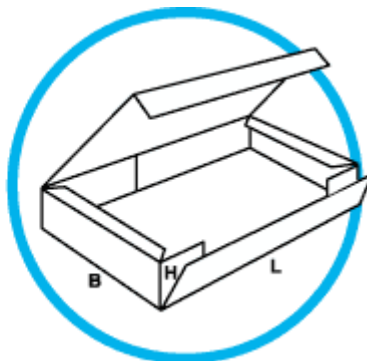
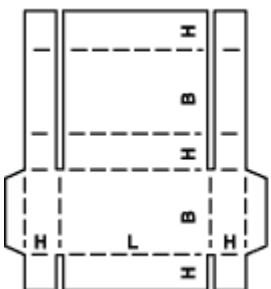
Montage : M/A



Montage : M



Montage : M/A

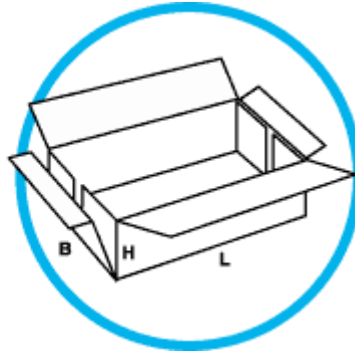
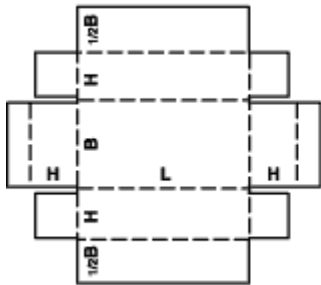


Category : 04

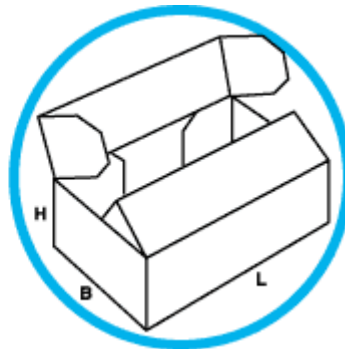
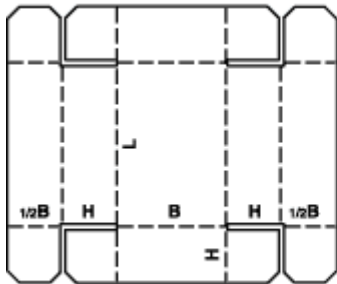
Folder-type boxes and trays usually consist of only one piece of board. The bottom of the box is hinged to form two or all side walls and the cover. Locking tabs, handles, display panels etc., can be incorporated in some designs.

Description : 0415

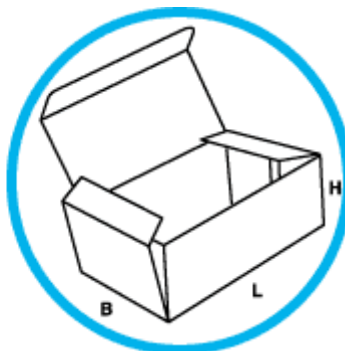
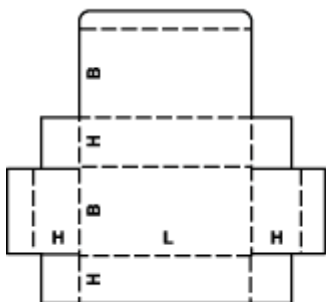
Montage : M/A



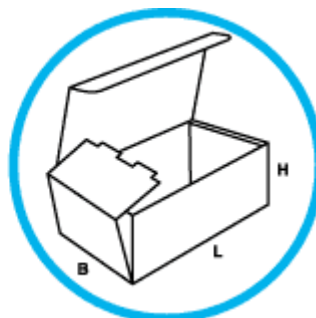
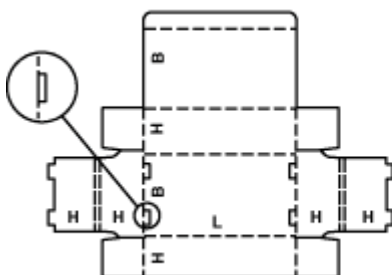
Montage : M



Montage : M/A



Montage : M/A

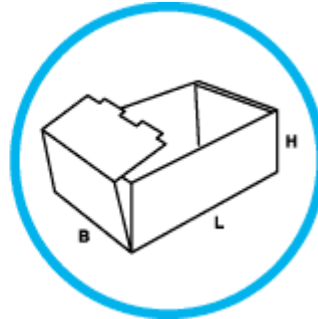
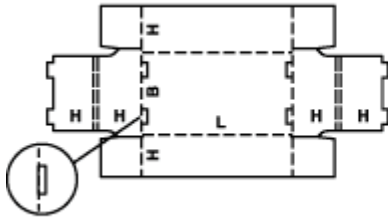


Category : 04

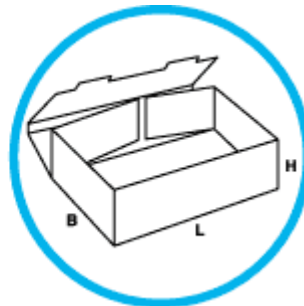
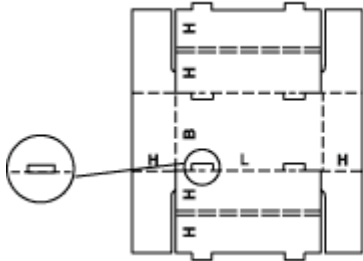
Folder-type boxes and trays usually consist of only one piece of board. The bottom of the box is hinged to form two or all side walls and the cover. Locking tabs, handles, display panels etc., can be incorporated in some designs.

Description : 0422

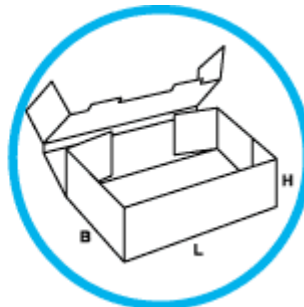
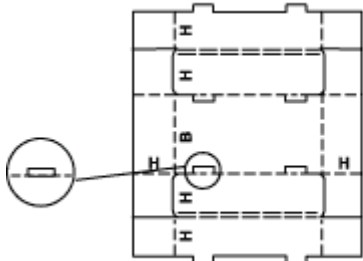
Montage : M/A



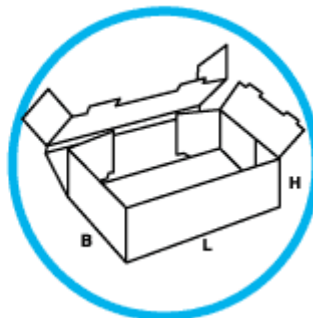
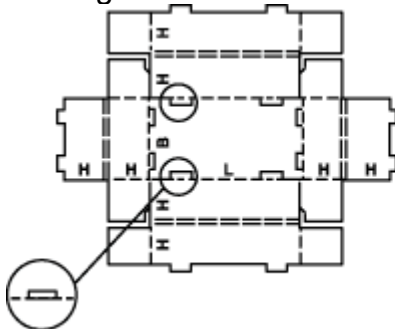
Montage : M/A



Montage : M/A



Montage : M/A

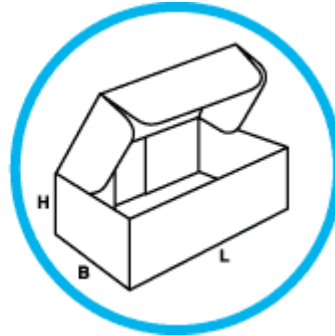
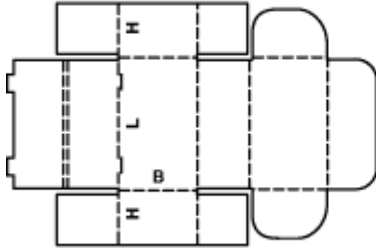


Category : 04

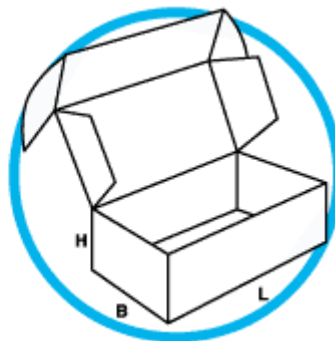
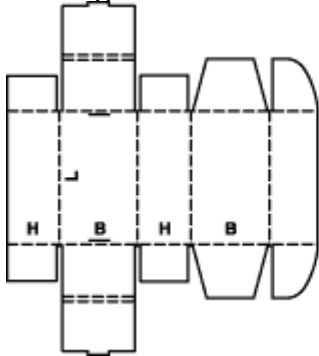
Folder-type boxes and trays usually consist of only one piece of board. The bottom of the box is hinged to form two or all side walls and the cover. Locking tabs, handles, display panels etc., can be incorporated in some designs.

Description : 0426

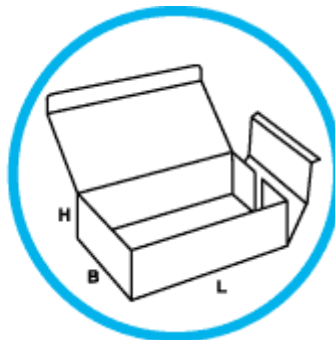
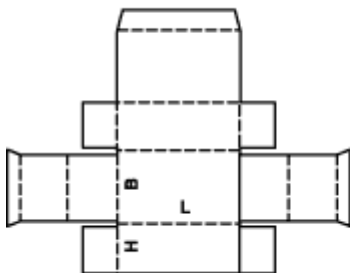
Montage : M



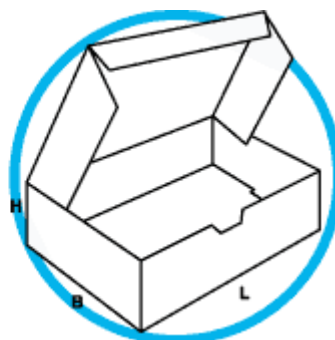
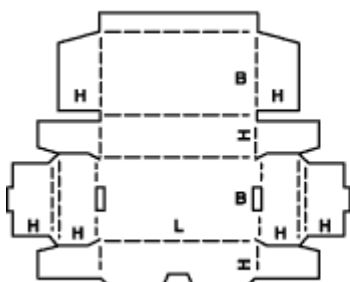
Montage : M



Montage : M



Montage : M

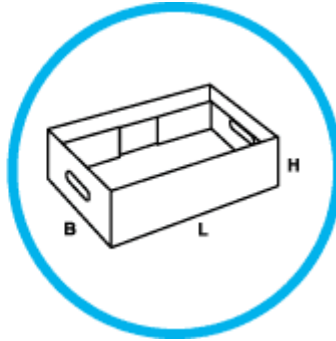
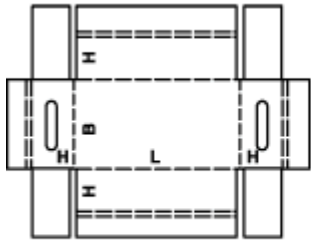


Category : 04

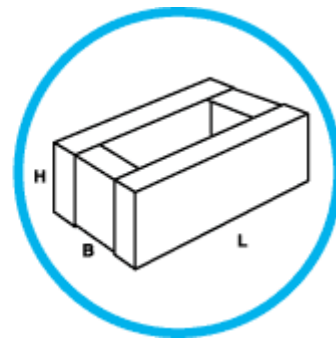
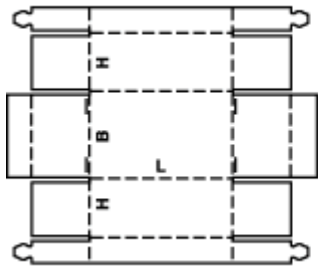
Folder-type boxes and trays usually consist of only one piece of board. The bottom of the box is hinged to form two or all side walls and the cover. Locking tabs, handles, display panels etc., can be incorporated in some designs.

Description : 0430

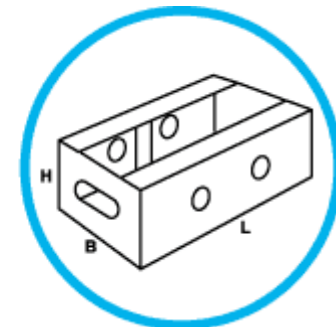
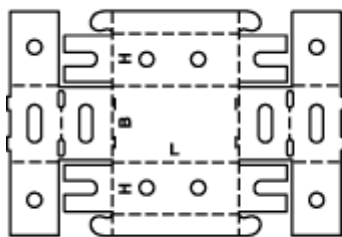
Montage : M/A



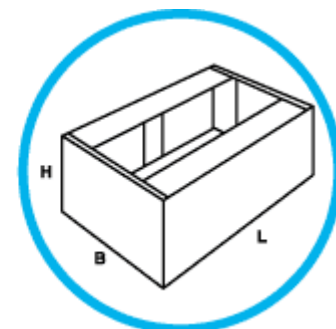
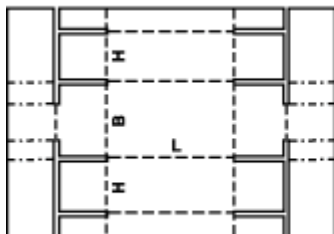
Montage : M



Montage : M



Montage : M

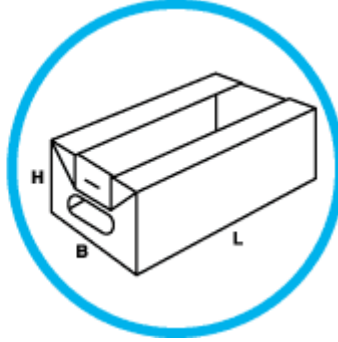
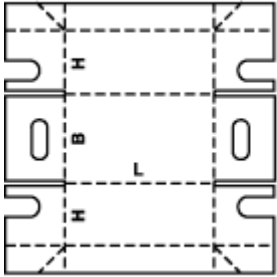


Category : 04

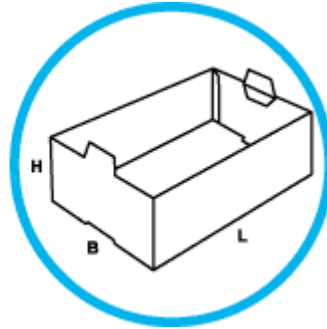
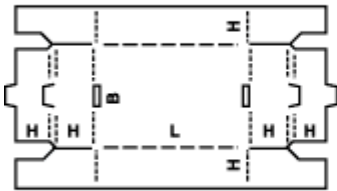
Folder-type boxes and trays usually consist of only one piece of board. The bottom of the box is hinged to form two or all side walls and the cover. Locking tabs, handles, display panels etc., can be incorporated in some designs.

Description : 0434

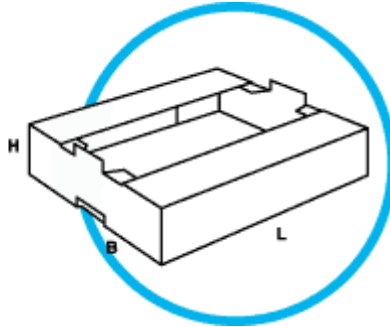
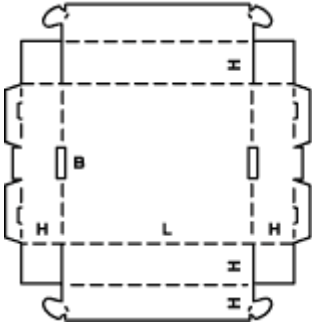
Montage : M



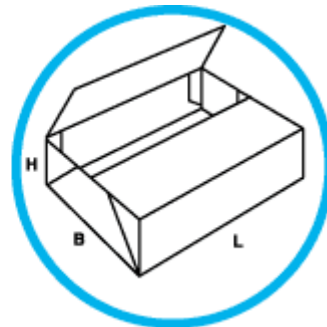
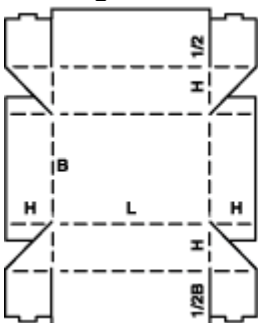
Montage : M/A



Montage : M



Montage : M

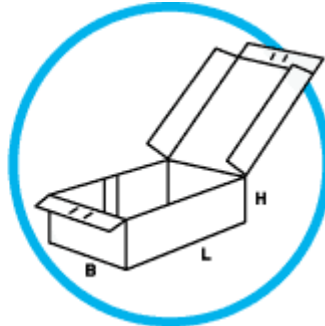
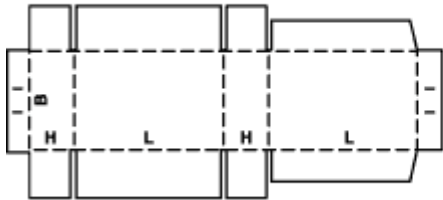


Category : 04

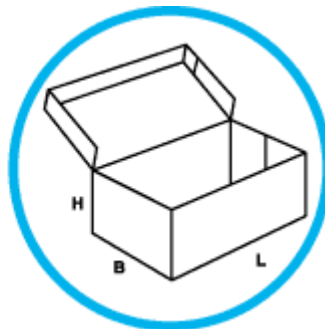
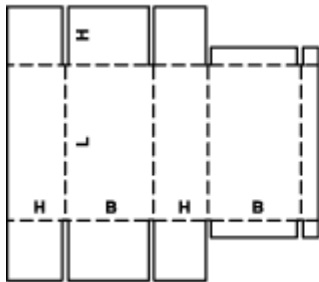
Folder-type boxes and trays usually consist of only one piece of board. The bottom of the box is hinged to form two or all side walls and the cover. Locking tabs, handles, display panels etc., can be incorporated in some designs.

Description : 0440

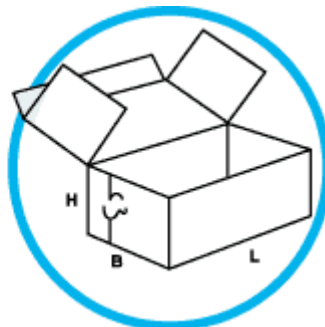
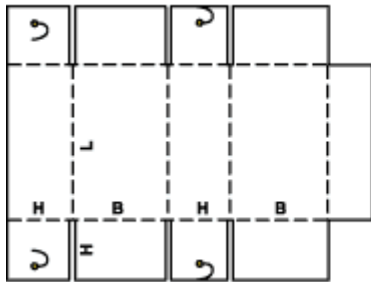
Montage : A



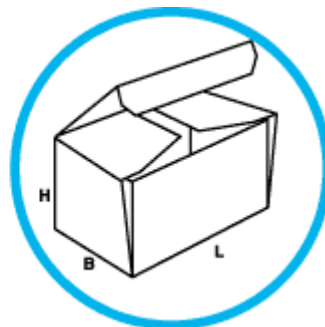
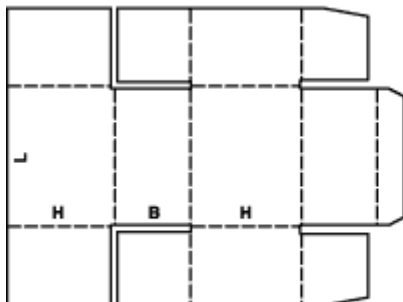
Montage : A



Montage : M



Montage : M

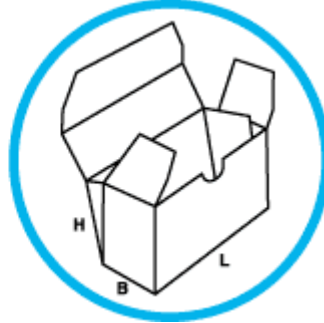
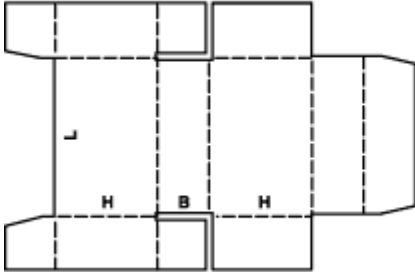


Category : 04

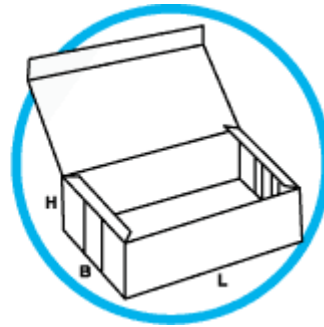
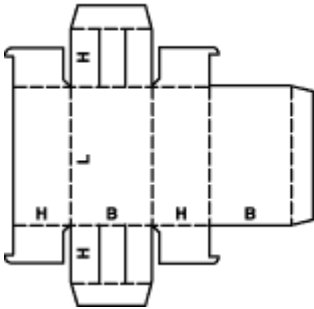
Folder-type boxes and trays usually consist of only one piece of board. The bottom of the box is hinged to form two or all side walls and the cover. Locking tabs, handles, display panels etc., can be incorporated in some designs.

Description : 0444

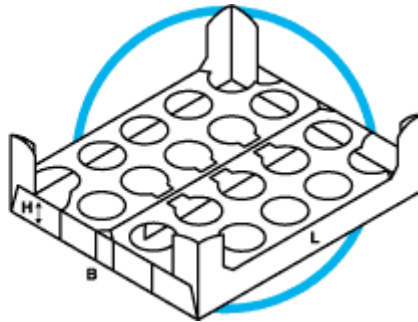
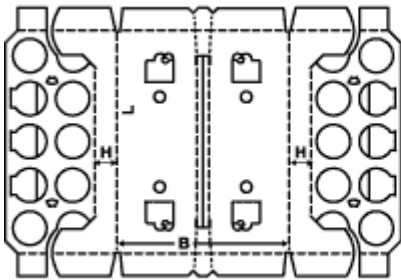
Montage : M



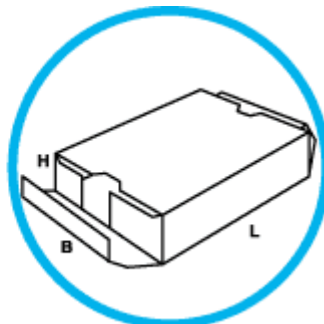
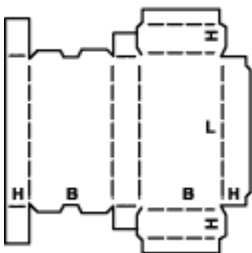
Montage : M



Montage : A



Montage : M

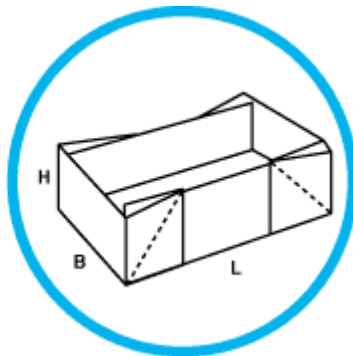
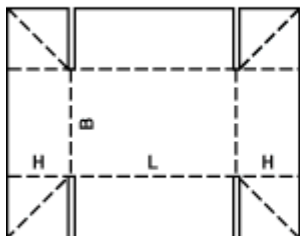


Category : 04

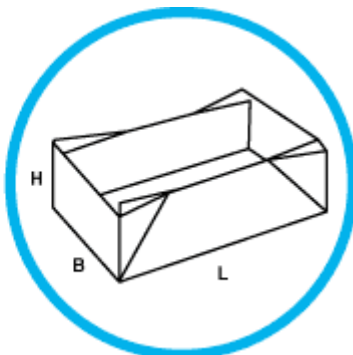
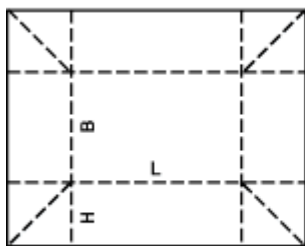
Folder-type boxes and trays usually consist of only one piece of board. The bottom of the box is hinged to form two or all side walls and the cover. Locking tabs, handles, display panels etc., can be incorporated in some designs.

Description : 0448

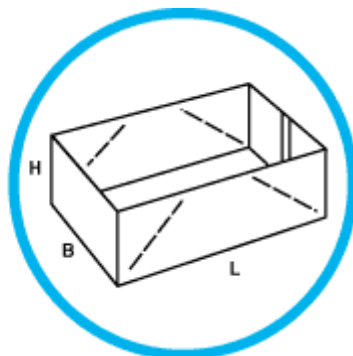
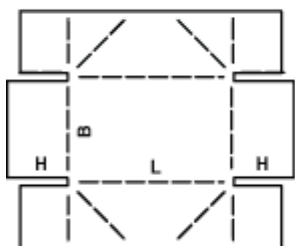
Montage : M



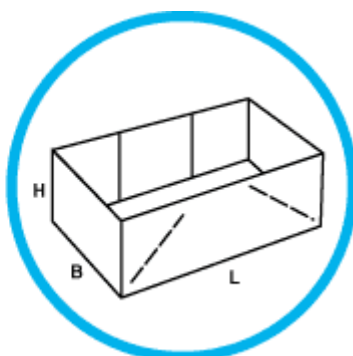
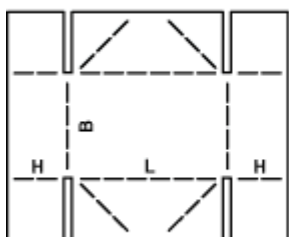
Montage : M



Montage : M



Montage : M

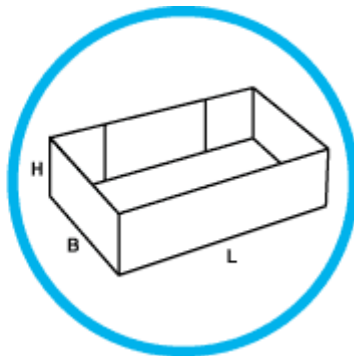
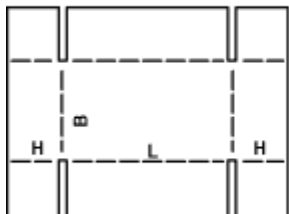


Category : 04

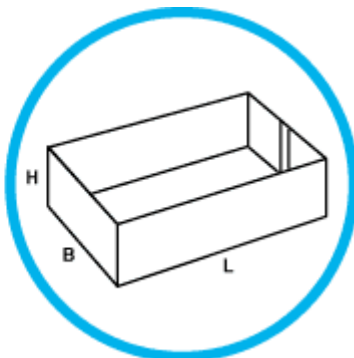
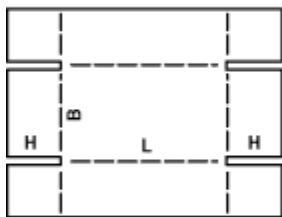
Folder-type boxes and trays usually consist of only one piece of board. The bottom of the box is hinged to form two or all side walls and the cover. Locking tabs, handles, display panels etc., can be incorporated in some designs.

Description : 0452

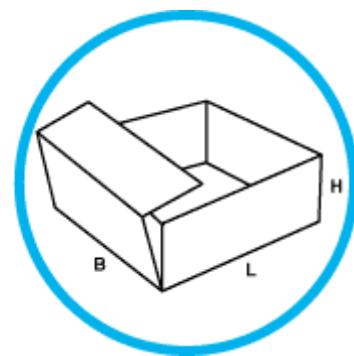
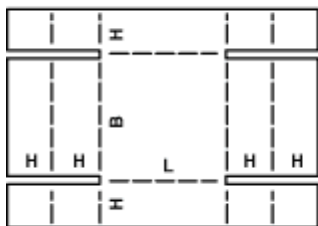
Montage : A



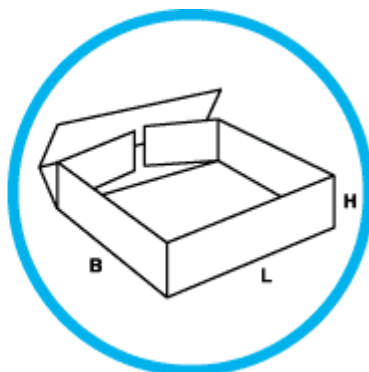
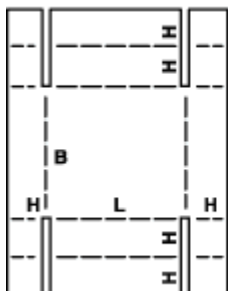
Montage : A



Montage : M



Montage : M

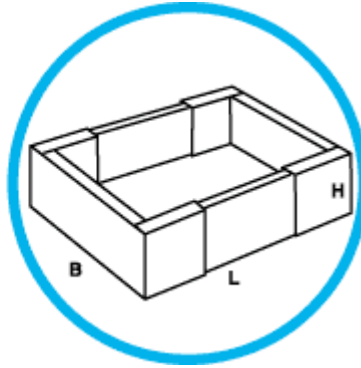
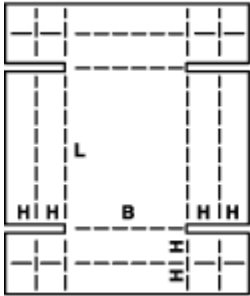


Category : 04

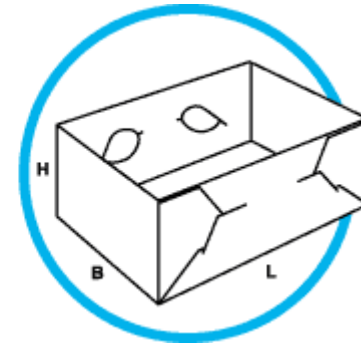
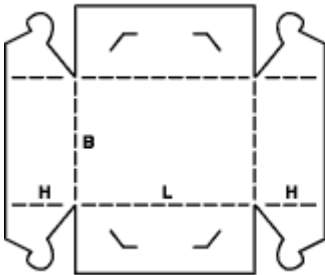
Folder-type boxes and trays usually consist of only one piece of board. The bottom of the box is hinged to form two or all side walls and the cover. Locking tabs, handles, display panels etc., can be incorporated in some designs.

Description : 0456

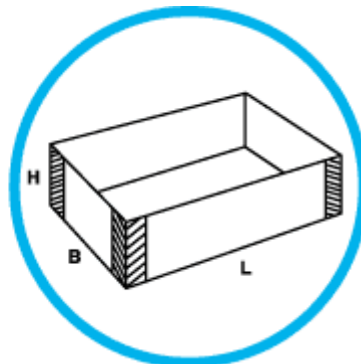
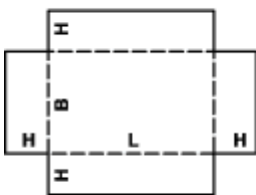
Montage : M



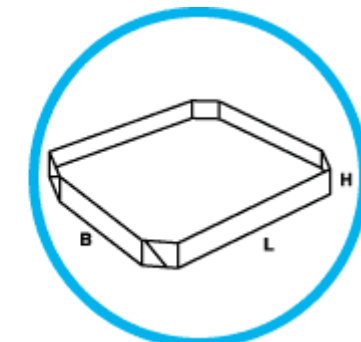
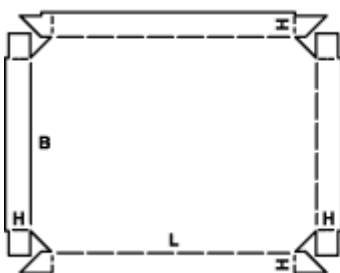
Montage : M



Montage : M



Montage : A

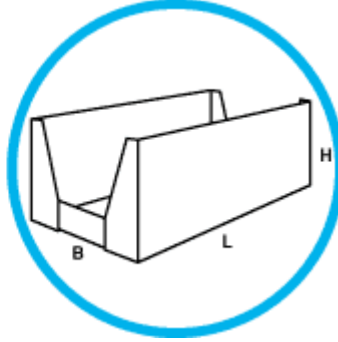
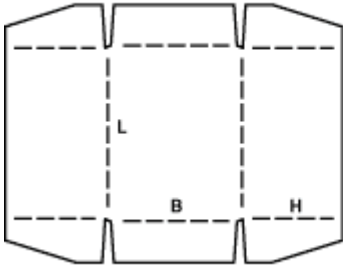


Category : 04

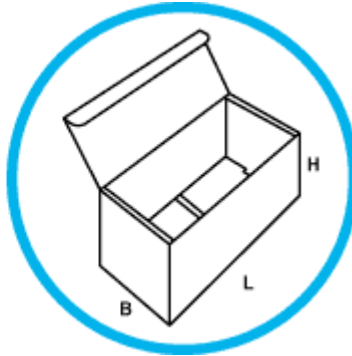
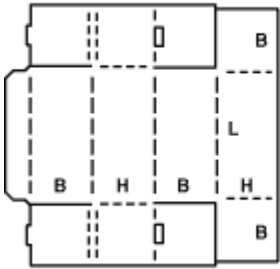
Folder-type boxes and trays usually consist of only one piece of board. The bottom of the box is hinged to form two or all side walls and the cover. Locking tabs, handles, display panels etc., can be incorporated in some designs.

Description : 0460

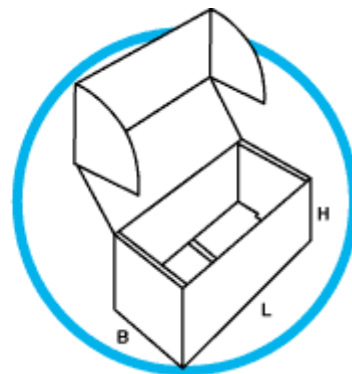
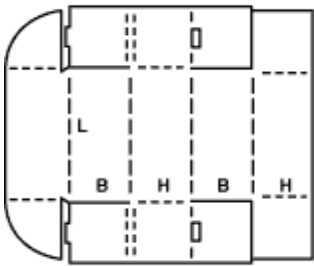
Montage : A



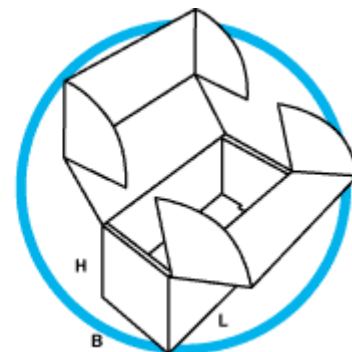
Montage : M



Montage : M



Montage : M

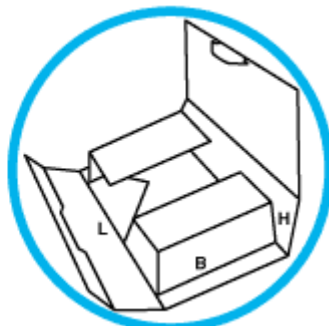
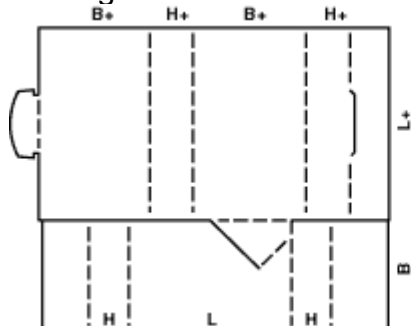


Category : 04

Folder-type boxes and trays usually consist of only one piece of board. The bottom of the box is hinged to form two or all side walls and the cover. Locking tabs, handles, display panels etc., can be incorporated in some designs.

Description : 0473

Montage : M

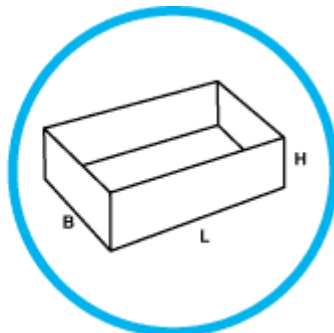
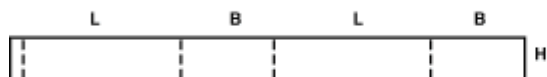


Category : 05

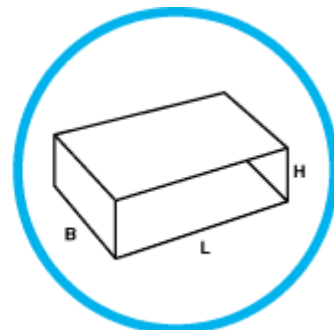
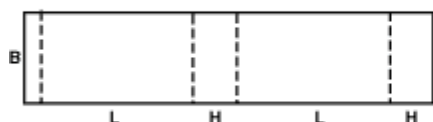
Slide-type boxes consist of several pieces of liners and sleeves sliding in different directions into each other. This group also includes outside sleeves for other cases.

Description : 0501

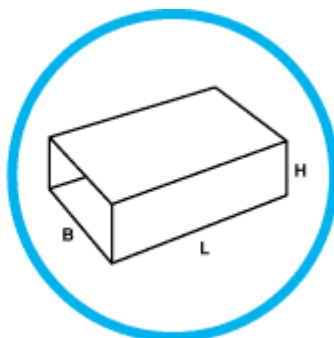
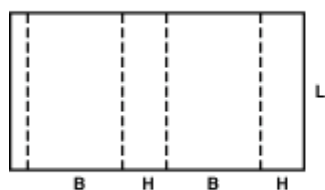
Montage : M



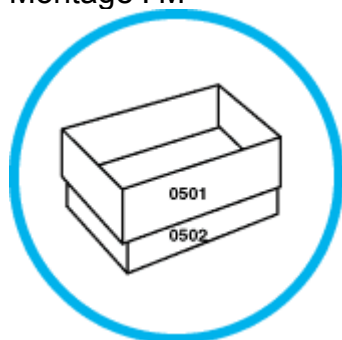
Montage : M



Montage : M



Montage : M

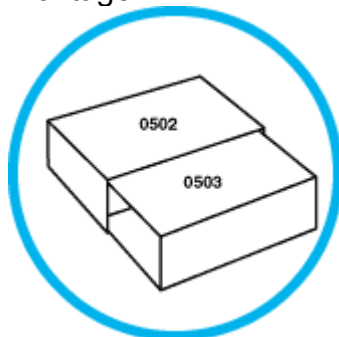


Category : 05

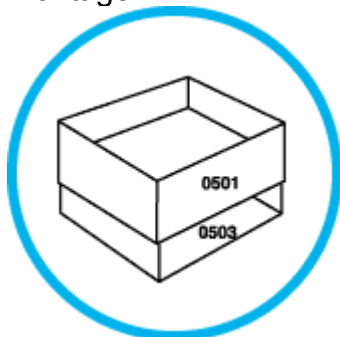
Slide-type boxes consist of several pieces of liners and sleeves sliding in different directions into each other. This group also includes outside sleeves for other cases.

Description : 0505

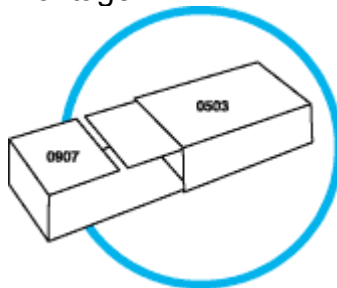
Montage : M



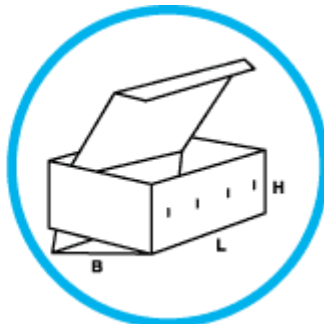
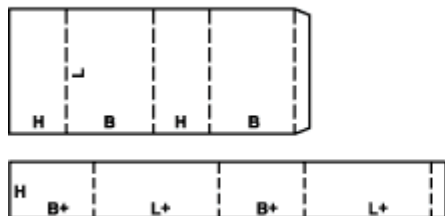
Montage : M



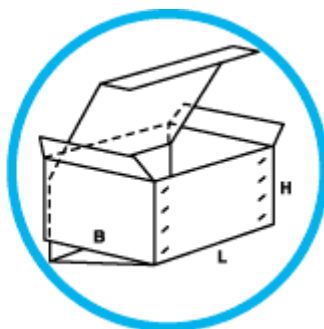
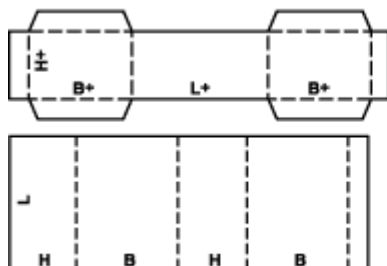
Montage : M



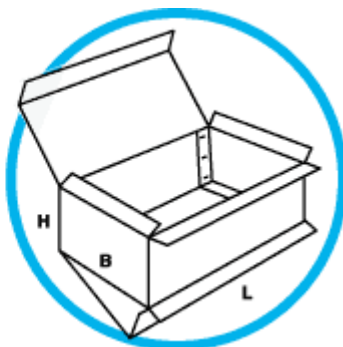
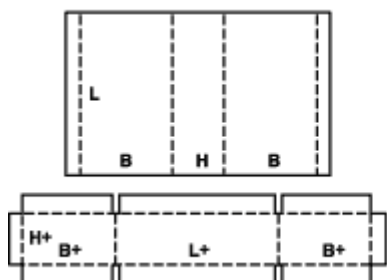
Montage : M



Montage : M



Montage : M

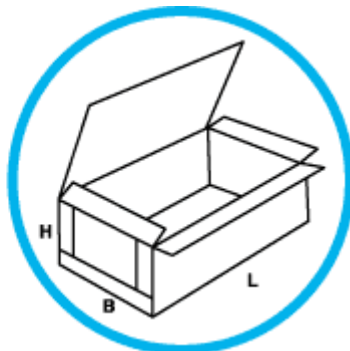
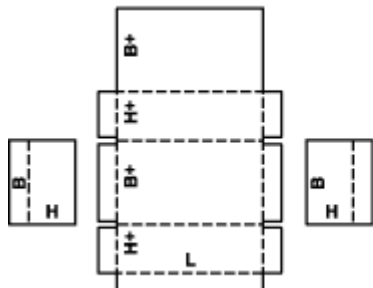


Category : 06

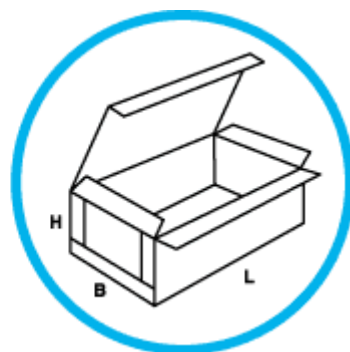
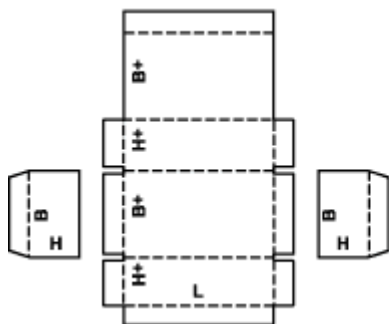
Rigid-type boxes consist of two separate end pieces and a body and require stitching or a similar operation before they can be used.

Description : 0601

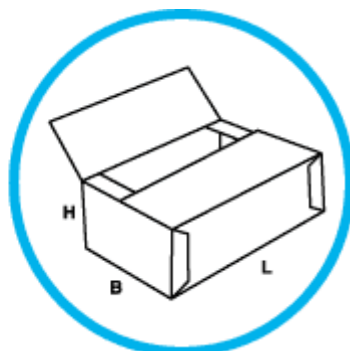
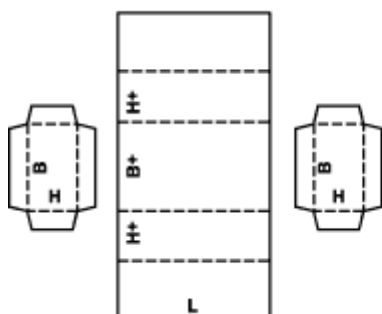
Montage : A



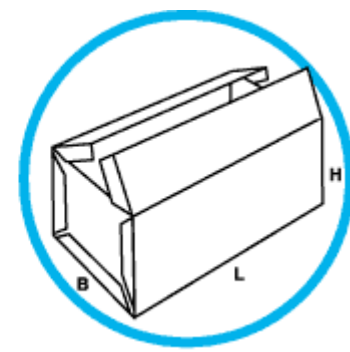
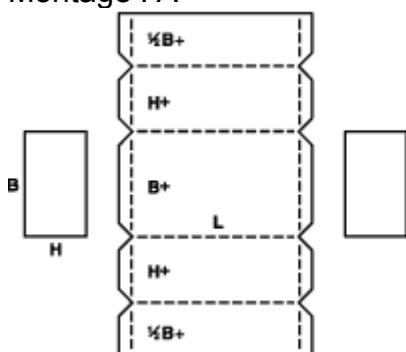
Montage : A



Montage : A



Montage : A

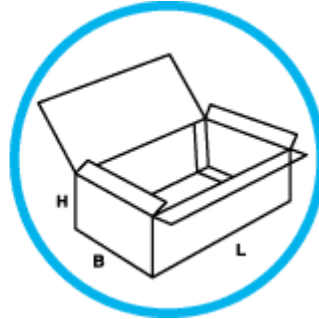
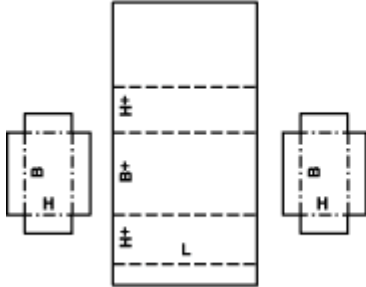


Category : 06

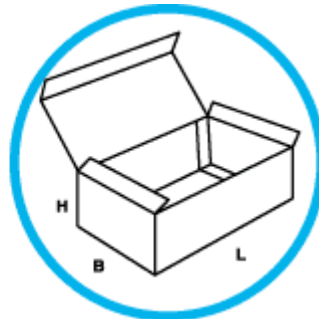
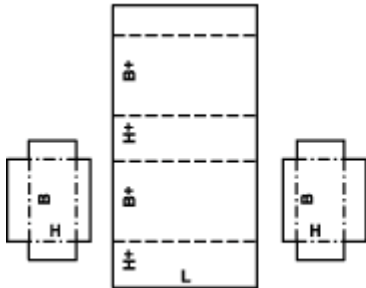
Rigid-type boxes consist of two separate end pieces and a body and require stitching or a similar operation before they can be used.

Description : 0607

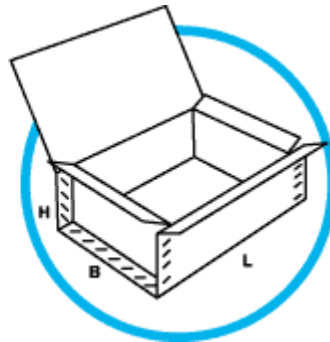
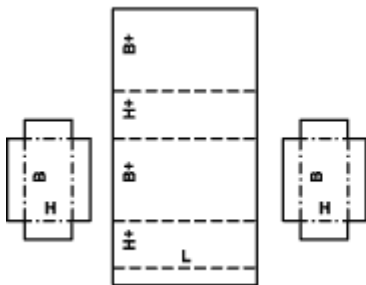
Montage : A



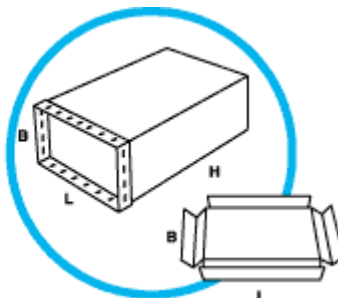
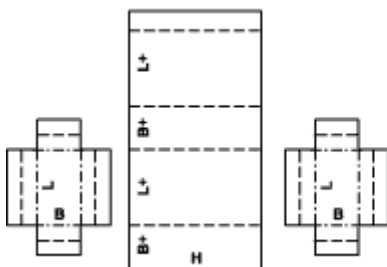
Montage : A



Montage : M/A



Montage : M/A

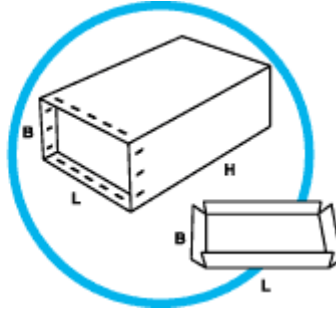
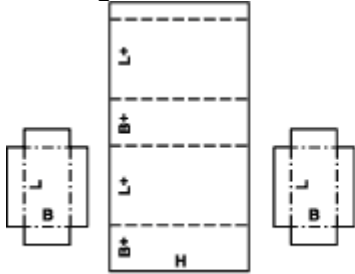


Category : 06

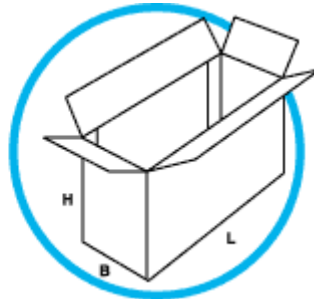
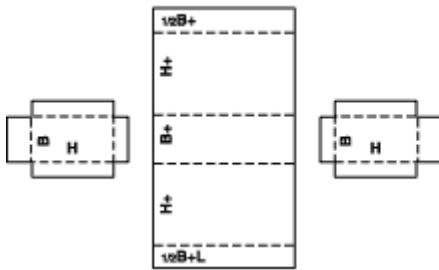
Rigid-type boxes consist of two separate end pieces and a body and require stitching or a similar operation before they can be used.

Description : 0616

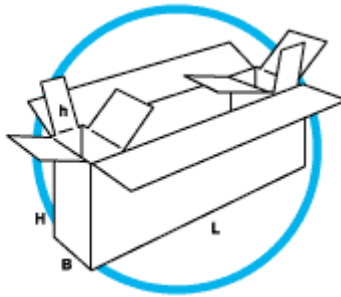
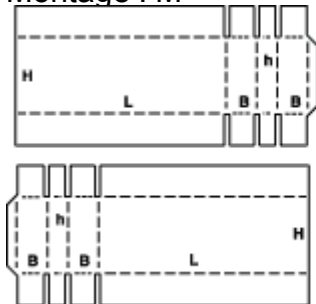
Montage : M/A



Montage : A



Montage : M

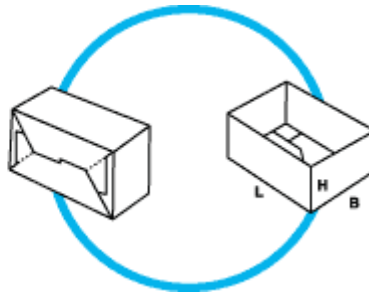
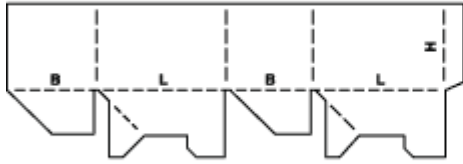


Category : 07

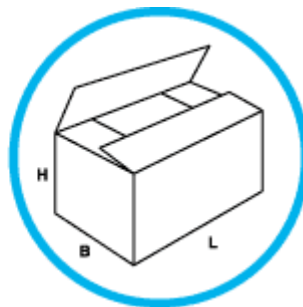
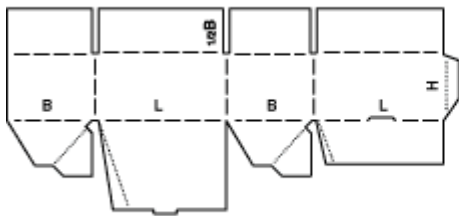
dy-glued cases consist of basically one piece, are shipped flat and ready to use by simple setting up.

Description : 0700

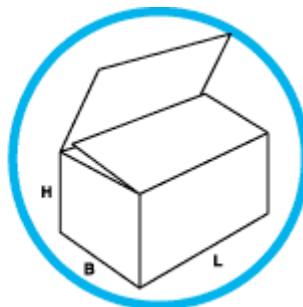
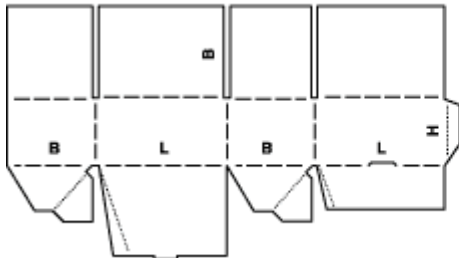
Montage : M



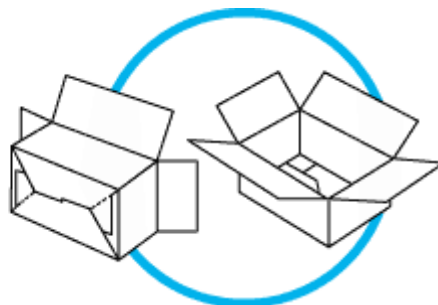
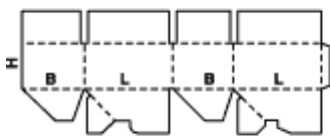
Montage : M



Montage : M



Montage : M

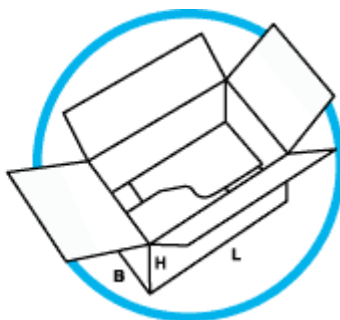
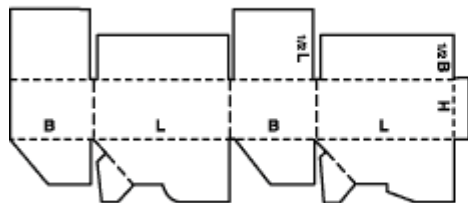


Category : 07

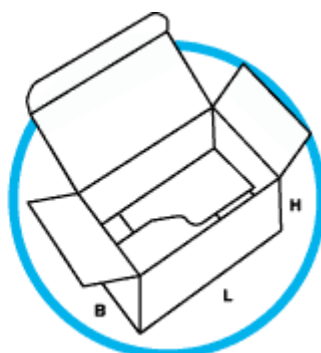
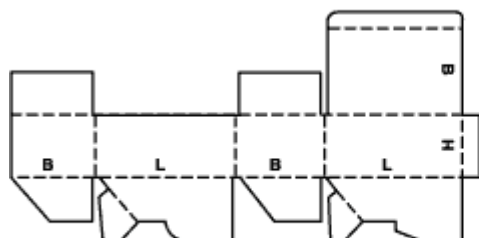
dy-glued cases consist of basically one piece, are shipped flat and ready to use by simple setting up.

Description : 0712

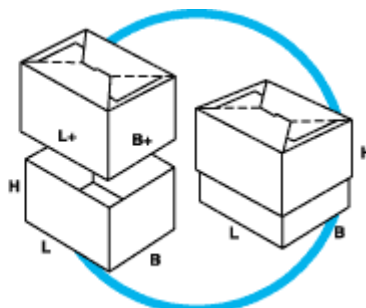
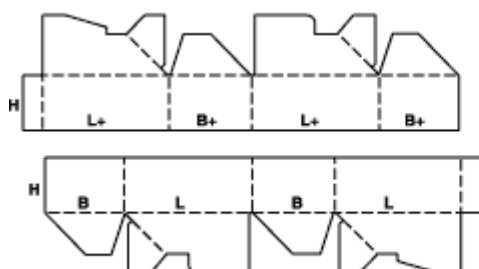
Montage : M



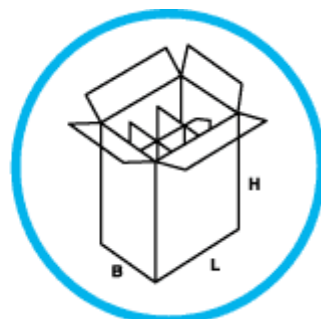
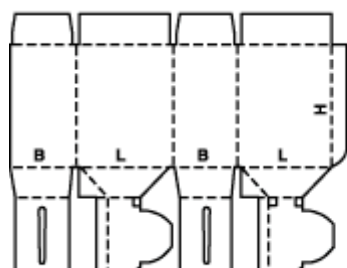
Montage : M



Montage : M



Montage : M

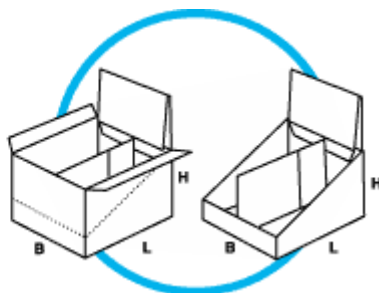
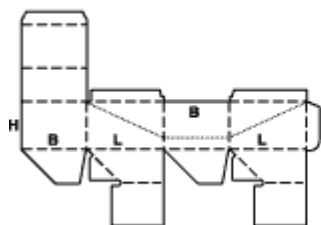


Category : 07

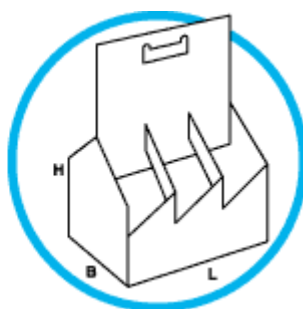
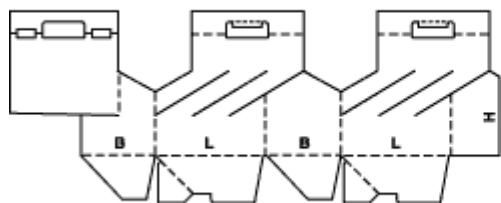
dy-glued cases consist of basically one piece, are shipped flat and ready to use by simple setting up.

Description : 0716

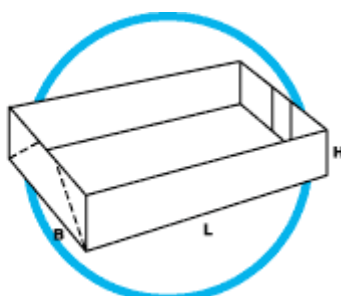
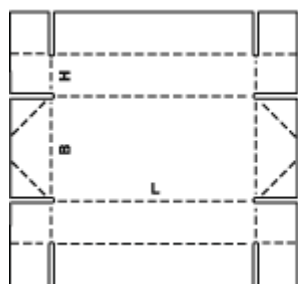
Montage : M



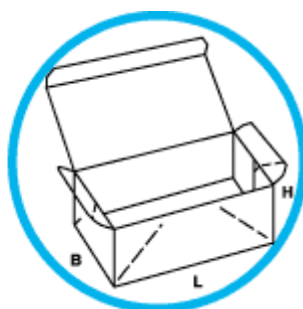
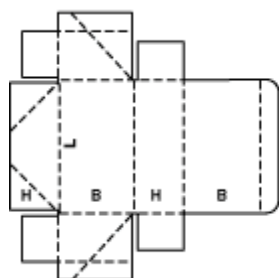
Montage : M



Montage : M



Montage : M

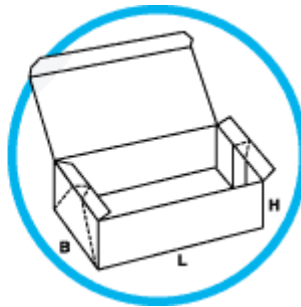
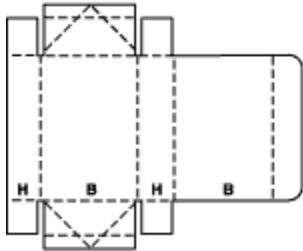


Category : 07

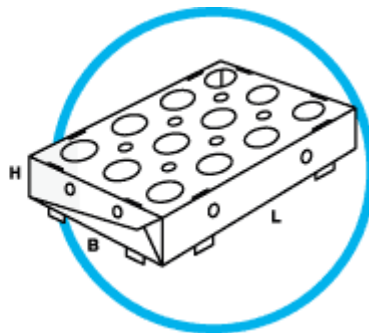
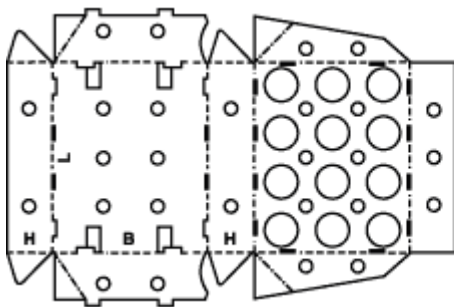
dy-glued cases consist of basically one piece, are shipped flat and ready to use by simple setting up.

Description : 0748

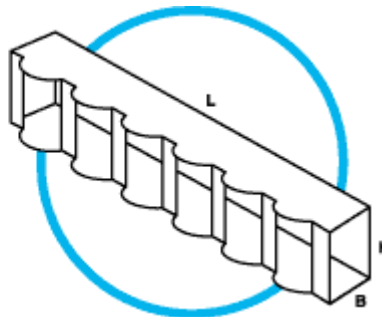
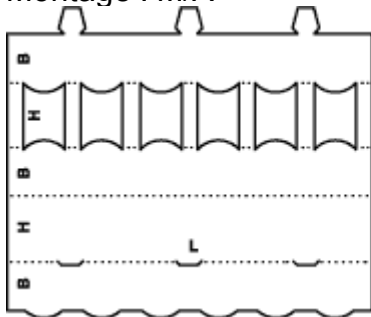
Montage : M



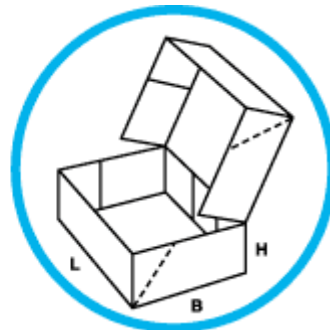
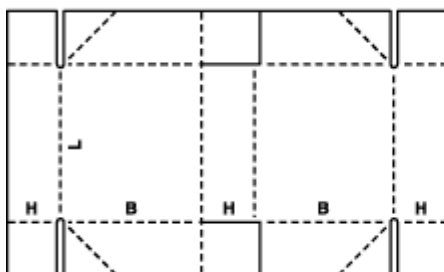
Montage : M



Montage : M/A



Montage : M

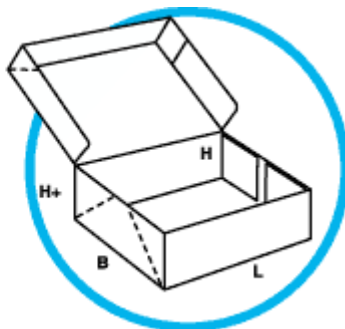
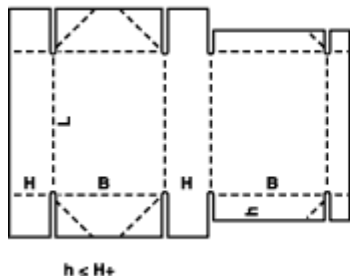


Category : 07

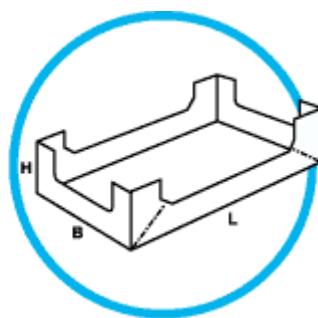
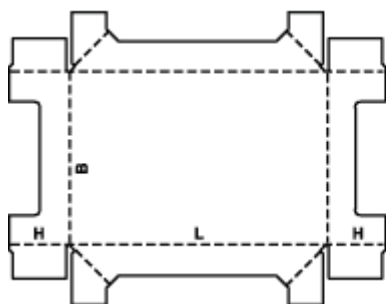
dy-glued cases consist of basically one piece, are shipped flat and ready to use by simple setting up.

Description : 0761

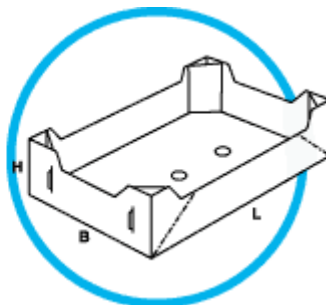
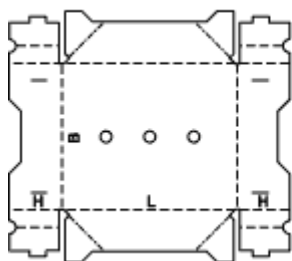
Montage : M



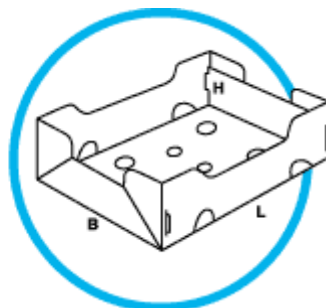
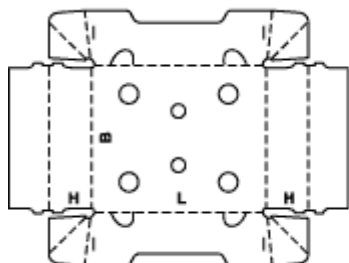
Montage : M



Montage : M



Montage : M

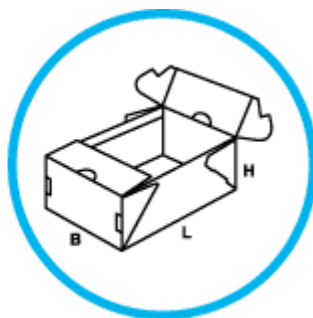
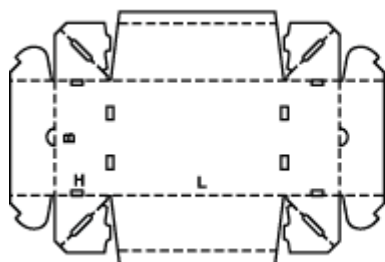


Category : 07

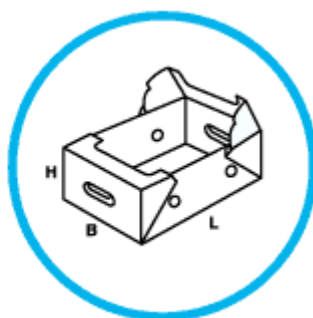
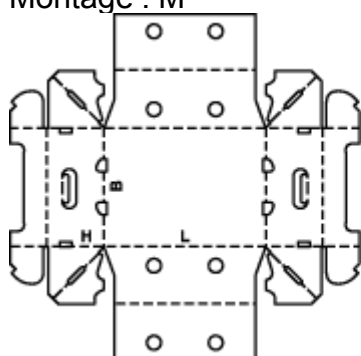
dy-glued cases consist of basically one piece, are shipped flat and ready to use by simple setting up.

Description : 0773

Montage : M



Montage : M

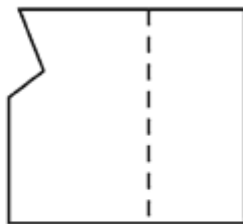
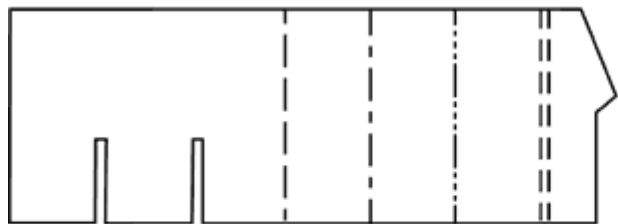


Category : 09

Interior fitments such as inside liners, pads, partitions, dividers etc, whether tied to Case Design or as singular items. Any shown number of panels is arbitrary and may be increased or decreased as required.

Coding of interior fitments

The following range of interior fitments is coded depending on the number of panels used, in any combination of shapes (for computer systems).

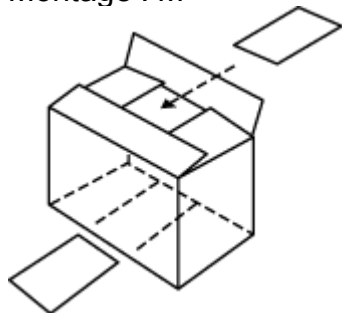


Number of panels	2	3	4	5	6	7	8	09	10
Code	0982	0983	0984	0985	0986	0987	0988	0989	0990
Number of panels	11	12	13	14	15	16	17	18	19
Code	0991	0992	0993	0994	0995	0996	0997	0998	0999

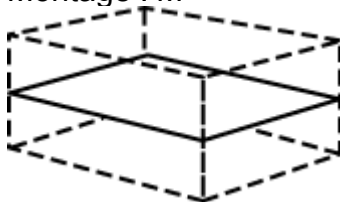
0982/0999
M

Description : 0900

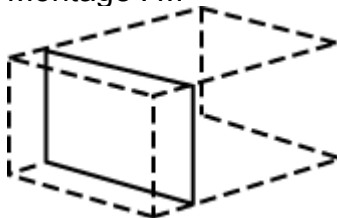
Montage : M



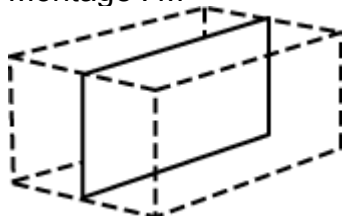
Montage : M



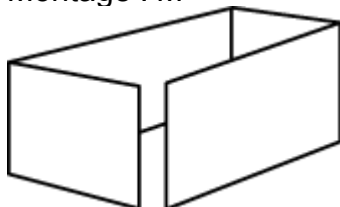
Montage : M



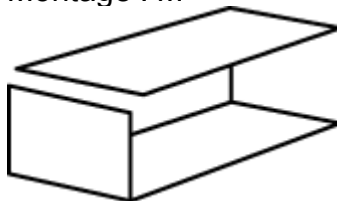
Montage : M



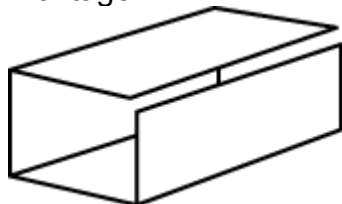
Montage : M



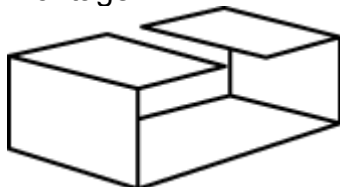
Montage : M



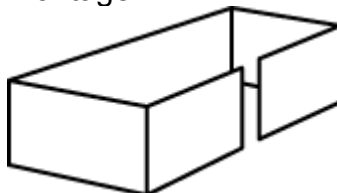
Montage : M



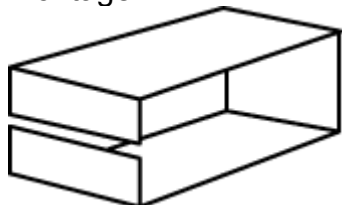
Montage : M



Montage : M



Montage : M

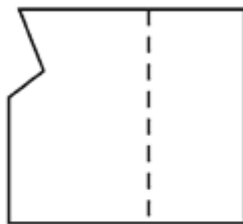
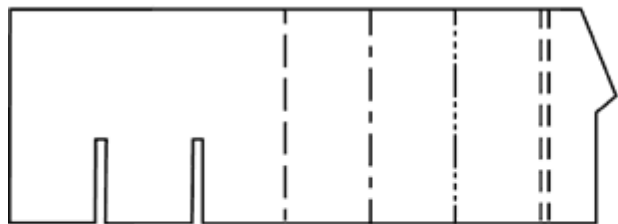


Category : 09

Interior fitments such as inside liners, pads, partitions, dividers etc, whether tied to Case Design or as singular items. Any shown number of panels is arbitrary and may be increased or decreased as required.

Coding of interior fitments

The following range of interior fitments is coded depending on the number of panels used, in any combination of shapes (for computer systems).

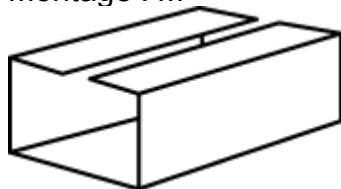


Number of panels	2	3	4	5	6	7	8	09	10
Code	0982	0983	0984	0985	0986	0987	0988	0989	0990
Number of panels	11	12	13	14	15	16	17	18	19
Code	0991	0992	0993	0994	0995	0996	0997	0998	0999

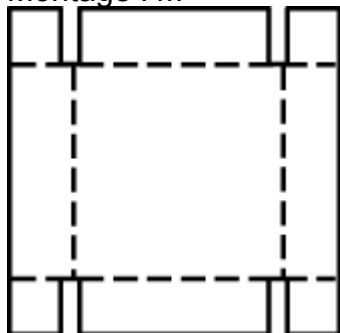
0982/0999
M

Description : 0910

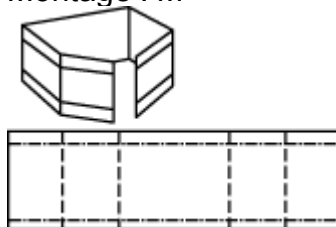
Montage : M



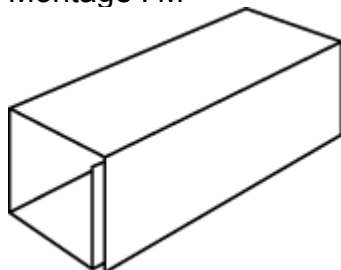
Montage : M



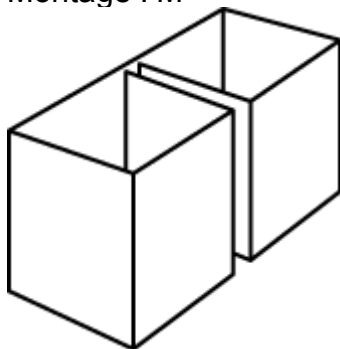
Montage : M



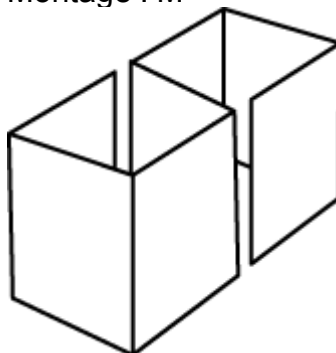
Montage : M



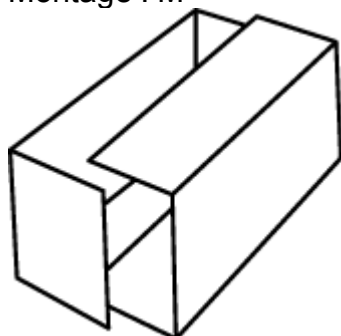
Montage : M



Montage : M

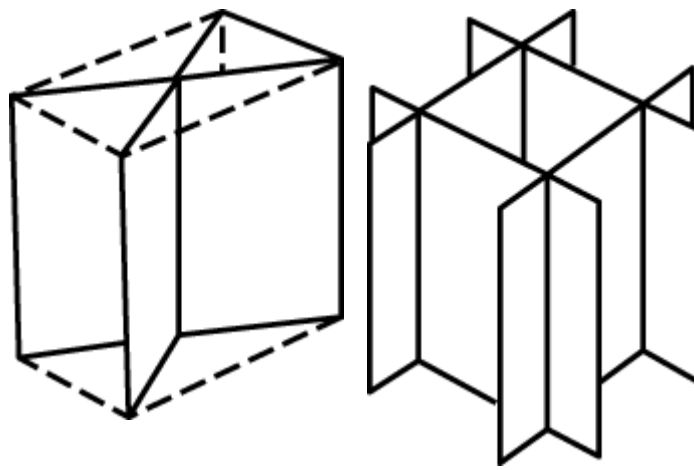


Montage : M

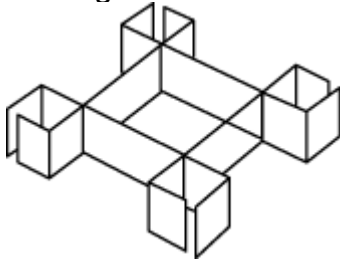


Montage : M

Montage : M



Montage : M

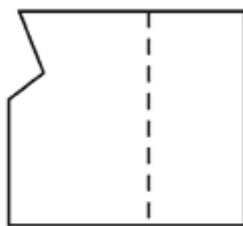
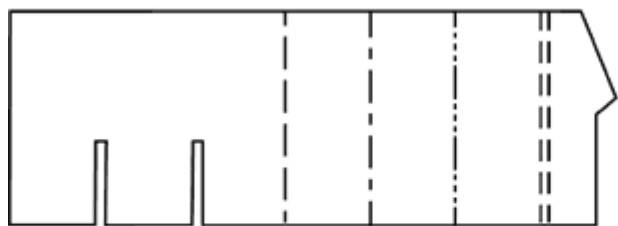


Category : 09

Interior fitments such as inside liners, pads, partitions, dividers etc, whether tied to Case Design or as singular items. Any shown number of panels is arbitrary and may be increased or decreased as required.

Coding of interior fitments

The following range of interior fitments is coded depending on the number of panels used, in any combination of shapes (for computer systems).

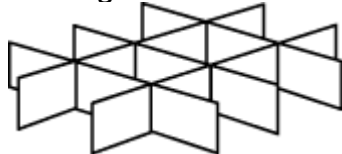


Number of panels	2	3	4	5	6	7	8	09	10
Code	0982	0983	0984	0985	0986	0987	0988	0989	0990
Number of panels	11	12	13	14	15	16	17	18	19
Code	0991	0992	0993	0994	0995	0996	0997	0998	0999

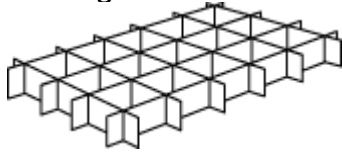
0982/0999
M

Description : 0933

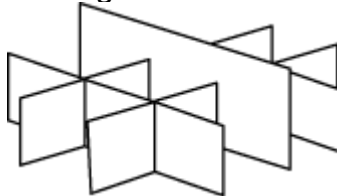
Montage : M



Montage : M



Montage : M



Montage : M



Montage : M



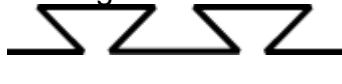
Montage : M



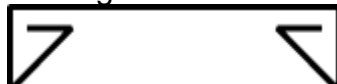
Montage : M



Montage : M



Montage : M



Montage : M

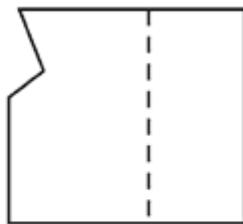
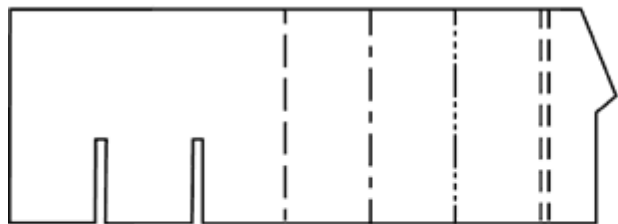


Category : 09

Interior fitments such as inside liners, pads, partitions, dividers etc, whether tied to Case Design or as singular items. Any shown number of panels is arbitrary and may be increased or decreased as required.

Coding of interior fitments

The following range of interior fitments is coded depending on the number of panels used, in any combination of shapes (for computer systems).



Number of panels	2	3	4	5	6	7	8	09	10
Code	0982	0983	0984	0985	0986	0987	0988	0989	0990
Number of panels	11	12	13	14	15	16	17	18	19
Code	0991	0992	0993	0994	0995	0996	0997	0998	0999

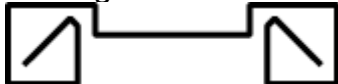
0982/0999
M

Description : 0947

Montage : M



Montage : M



Montage : M



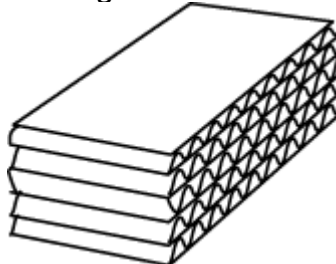
Montage : M



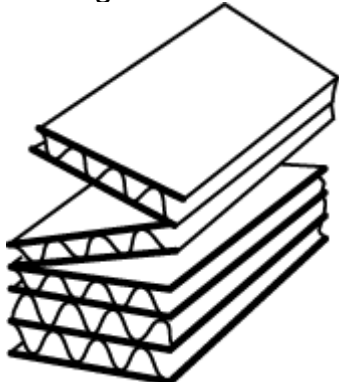
Montage : M



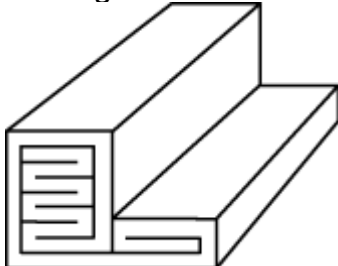
Montage : M



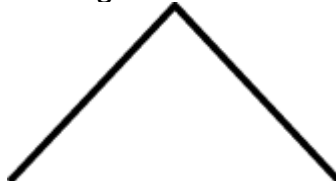
Montage : M



Montage : M



Montage : M



Montage : M

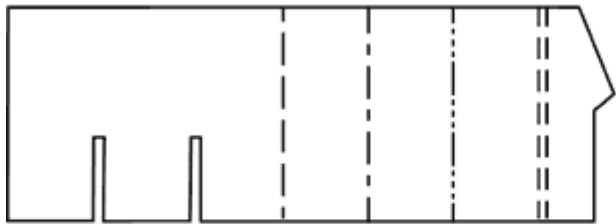
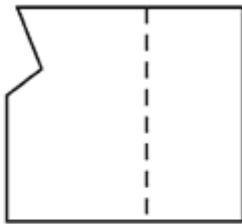


Category : 09

Interior fitments such as inside liners, pads, partitions, dividers etc, whether tied to Case Design or as singular items. Any shown number of panels is arbitrary and may be increased or decreased as required.

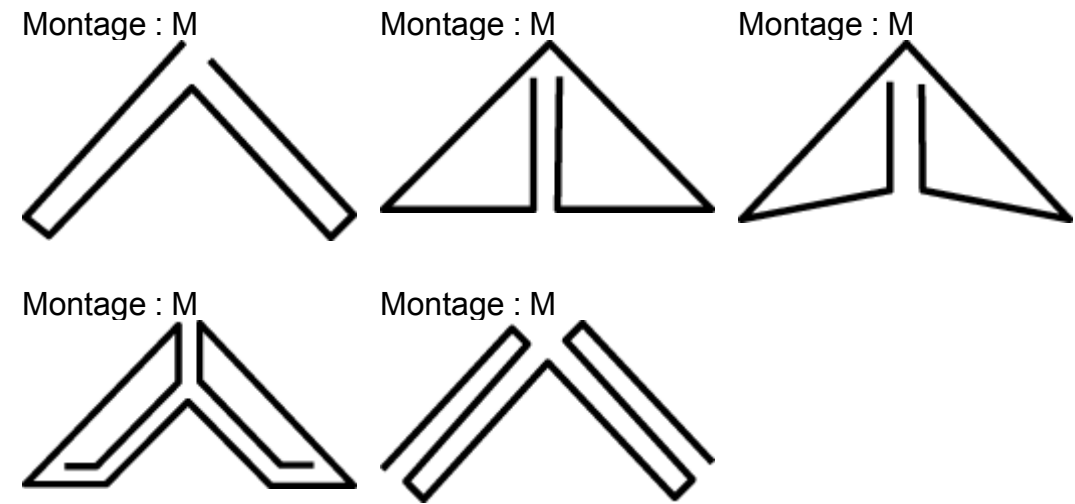
Coding of interior fitments

The following range of interior fitments is coded depending on the number of panels used, in any combination of shapes (for computer systems).

		Number of panels	2	3	4	5	6	7	8	09	10
		Code	0982	0983	0984	0985	0986	0987	0988	0989	0990
		Number of panels	11	12	13	14	15	16	17	18	19
		Code	0991	0992	0993	0994	0995	0996	0997	0998	0999

0982/0999
M

Description : 0972



The terms Box, Container and Case are interchangeable in the context of these descriptions.